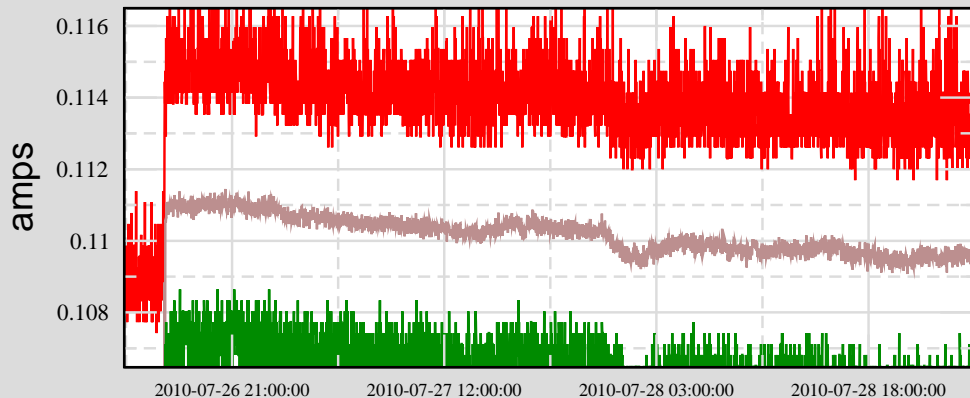


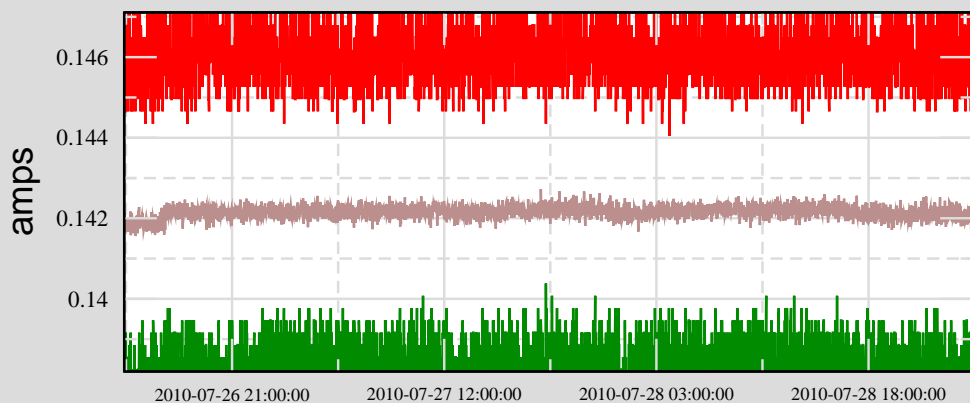


Trend from 10-07-26-13-21-47 to 10-07-29-01-20-47

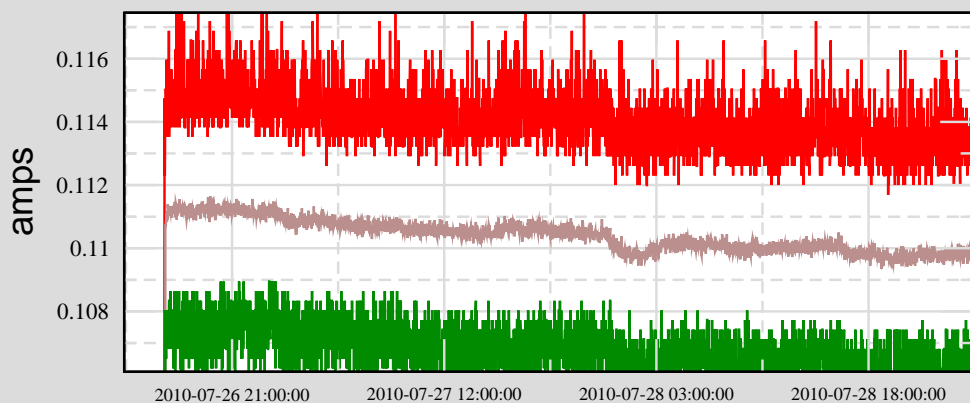
Ch 3: C4:TCS-ATHENA_I_SET_VOLTS (SLED current setpoint)



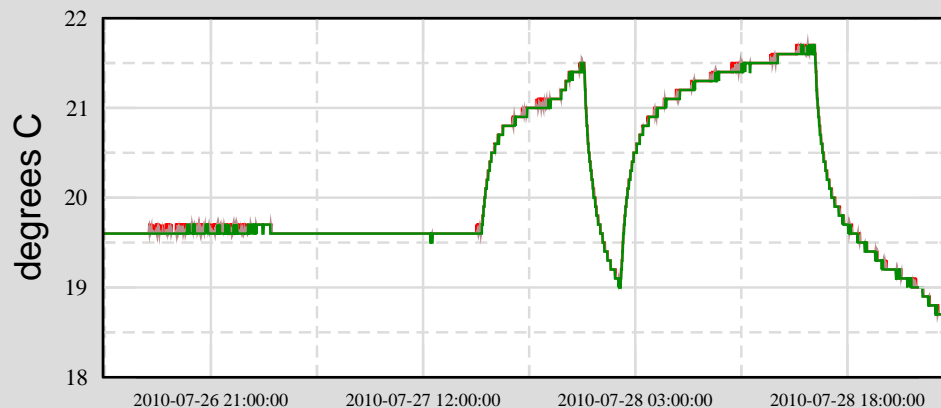
Ch 2: C4:TCS-ATHENA_I_LIM_VOLTS (SLED current limit)



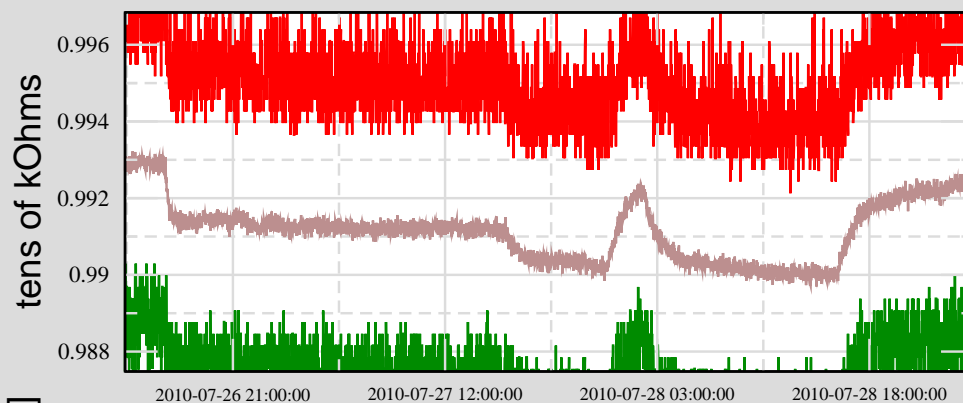
Ch 1: C4:TCS-ATHENA_I_ACTUAL_VOLTS (actual delivered current)



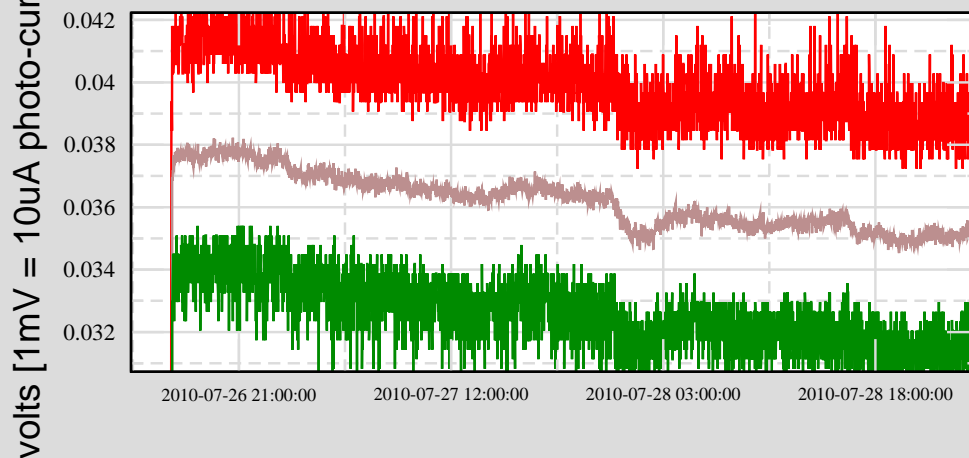
Ch 6: C4:PEM-SENS1_TEMP (Laboratory temperature)



Ch 5: C4:TCS-ATHENA_TEMP_SENS_V (on-board thermistor reading)



Ch 4: C4:TCS-ATHENA_PD_VOLTAGE (on-board photo-diode reading)



volts [1mV = 10uA photo-current]