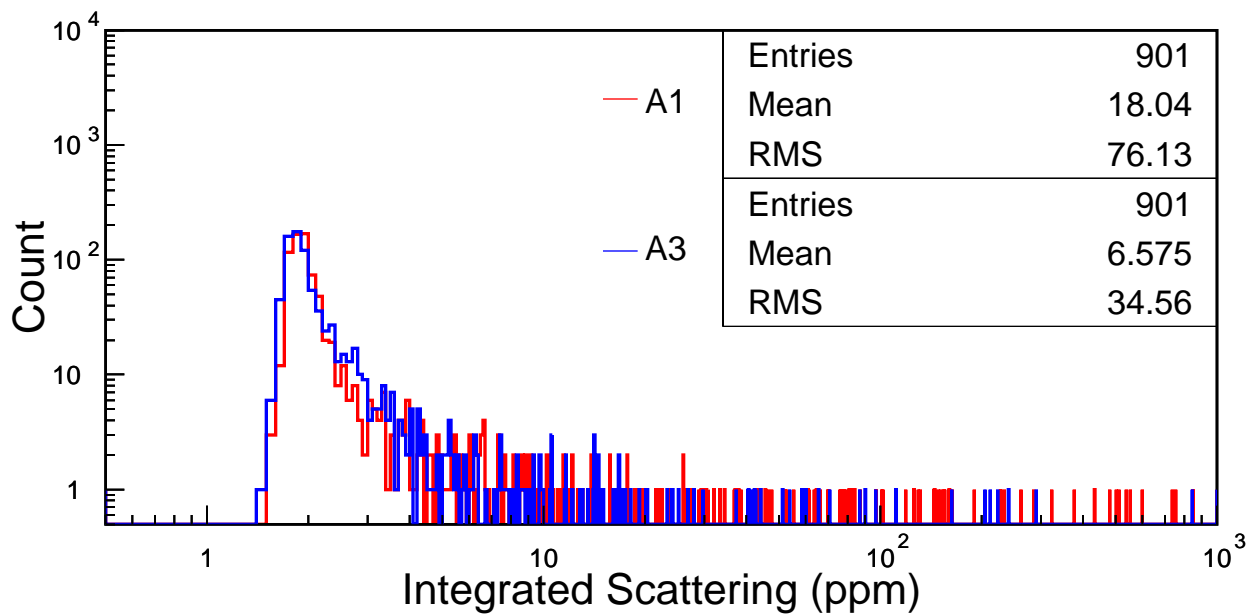
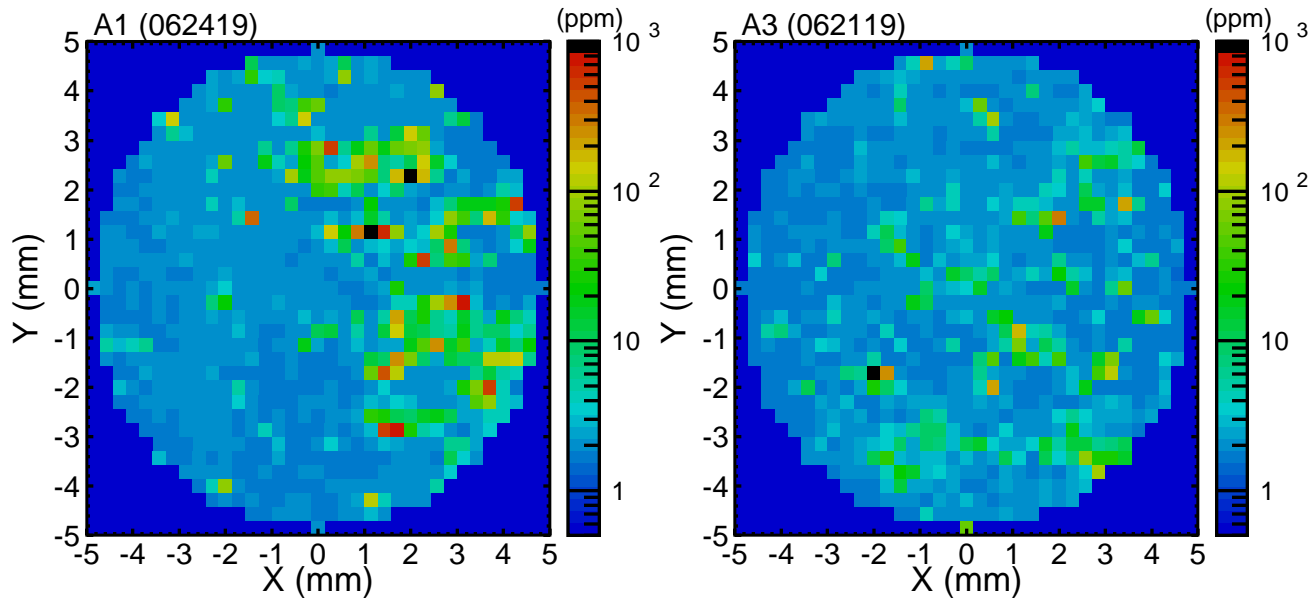
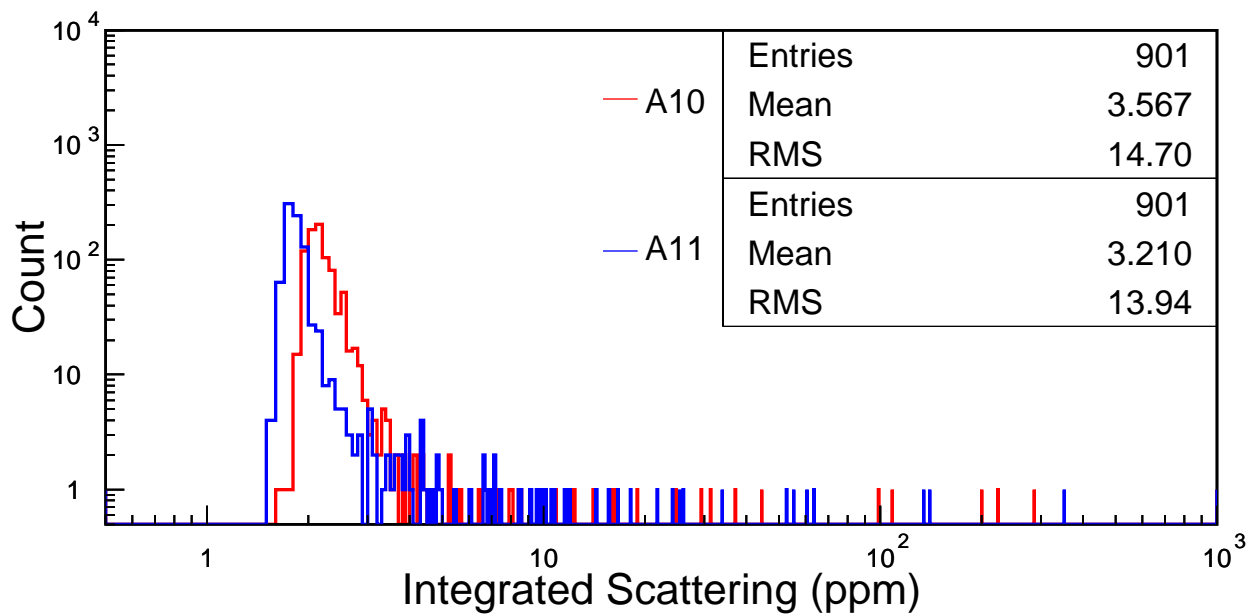
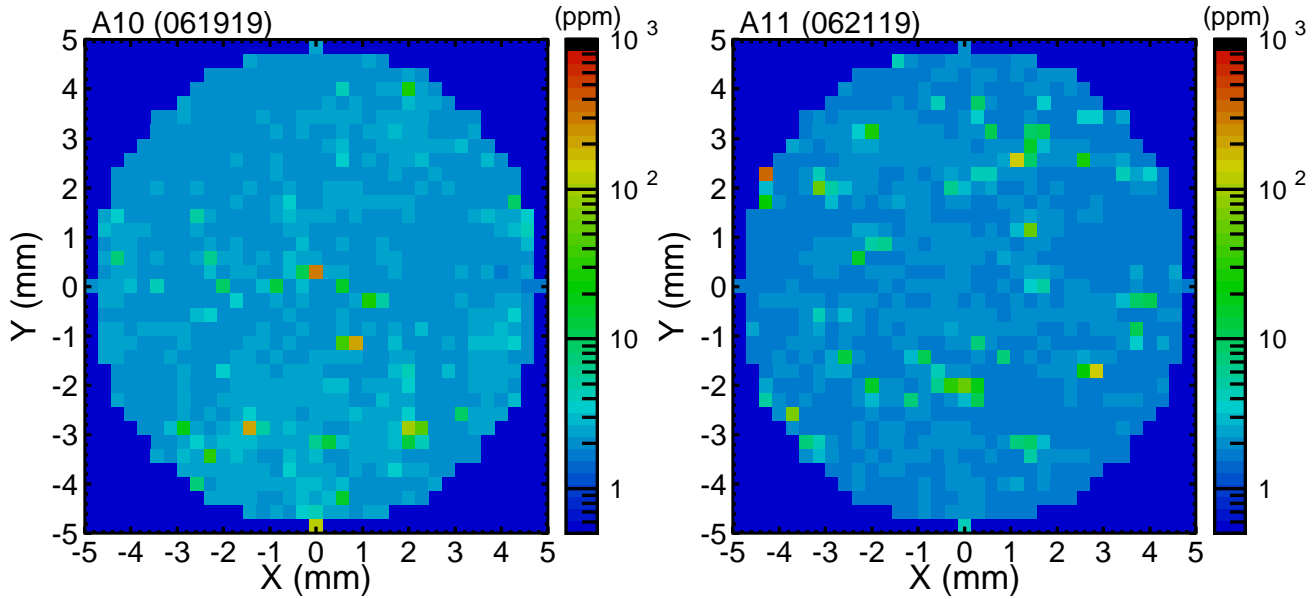


OMC Prism HR integrated scattering
 ($1^\circ \leq \theta \leq 75^\circ$, $\lambda=1064$ nm, beam ϕ =step=0.3 mm)



OMC Prism HR integrated scattering
 ($1^\circ \leq \theta \leq 75^\circ$, $\lambda=1064$ nm, beam ϕ =step=0.3 mm)



OMC Prism HR integrated scattering
($1^\circ \leq \theta \leq 75^\circ$, $\lambda=1064$ nm, beam ϕ =step=0.3 mm)

