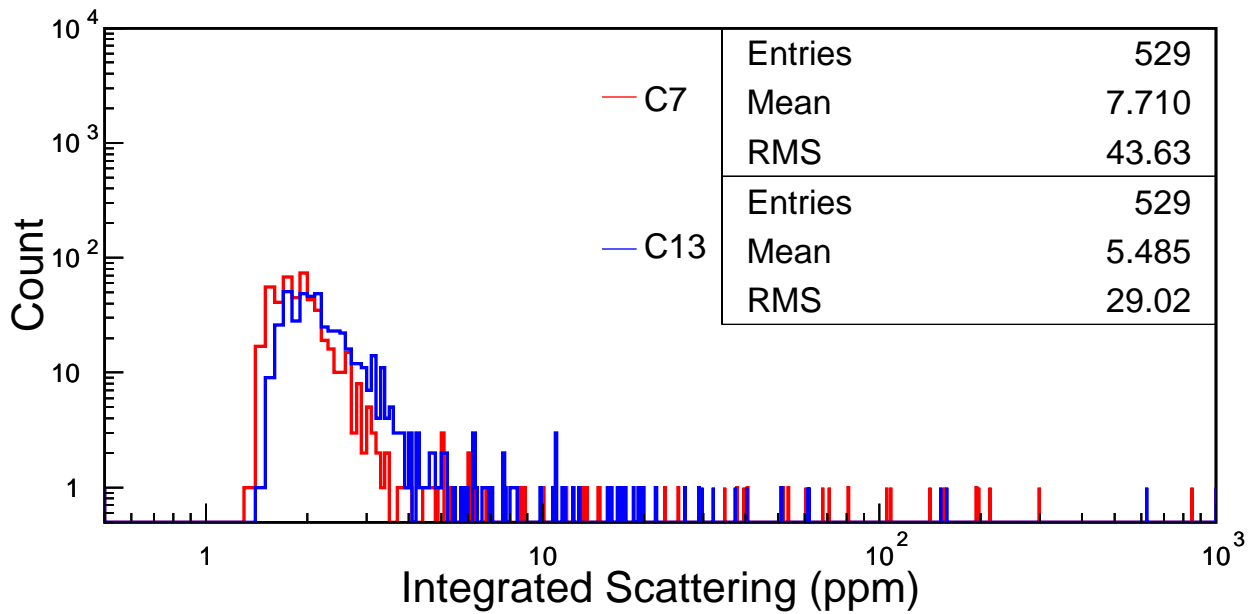
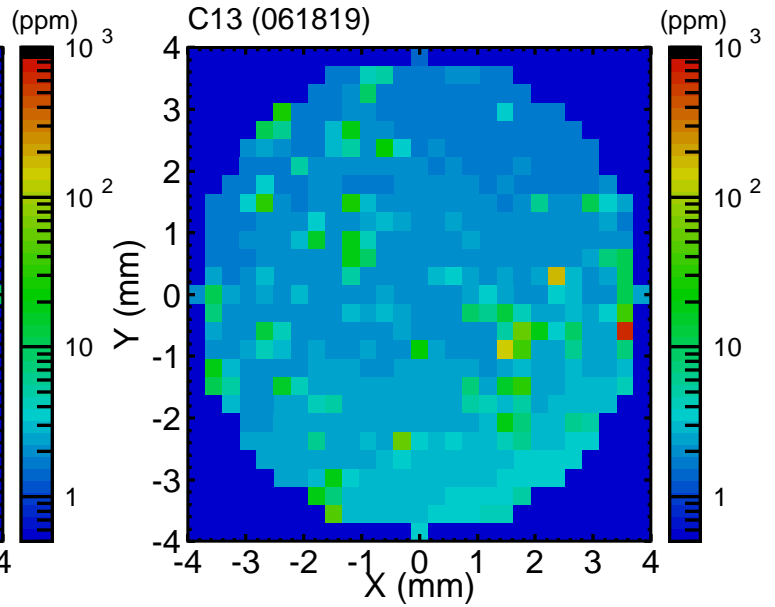
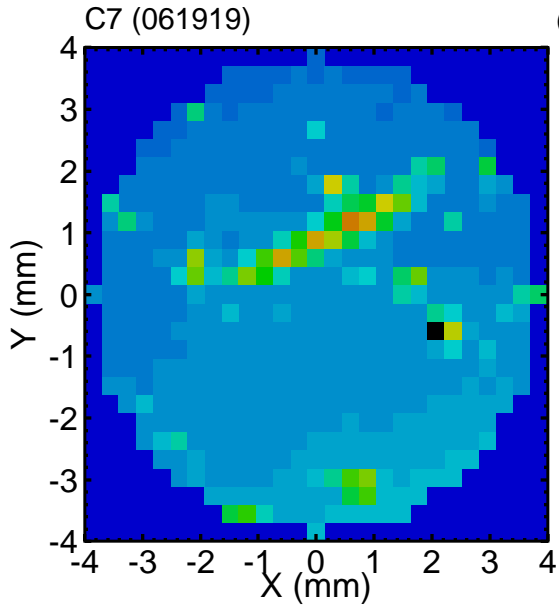


OMC CM HR integrated scattering

($1^\circ \leq \theta \leq 75^\circ$, $\lambda=1064$ nm, beam ϕ =step=0.3 mm, \uparrow at Y+)



OMC C10 HR integrated scattering

($1^\circ \leq \theta \leq 75^\circ$, $\lambda=1064$ nm, beam ϕ =step=0.3 mm, \uparrow at Y+)

