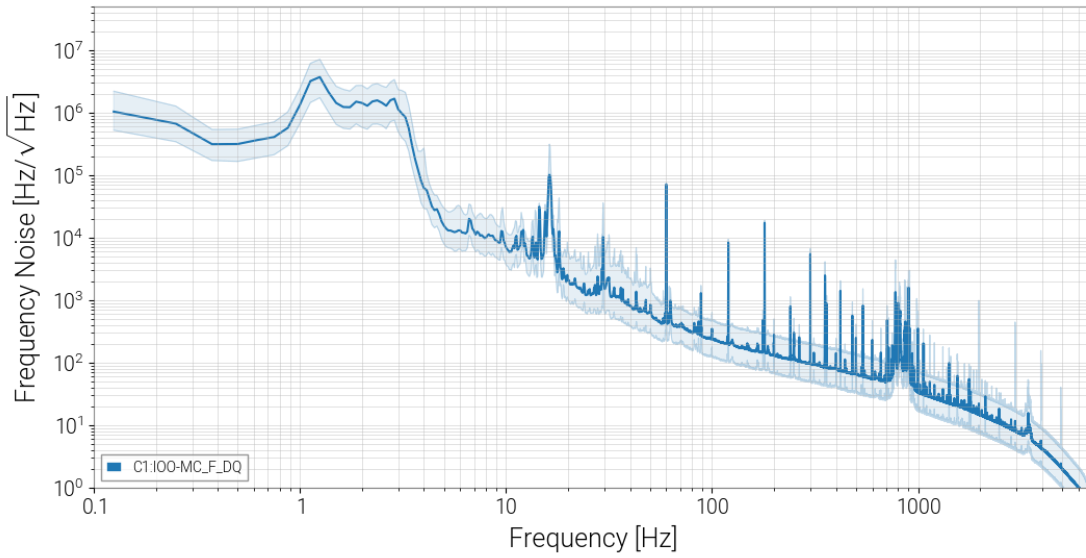


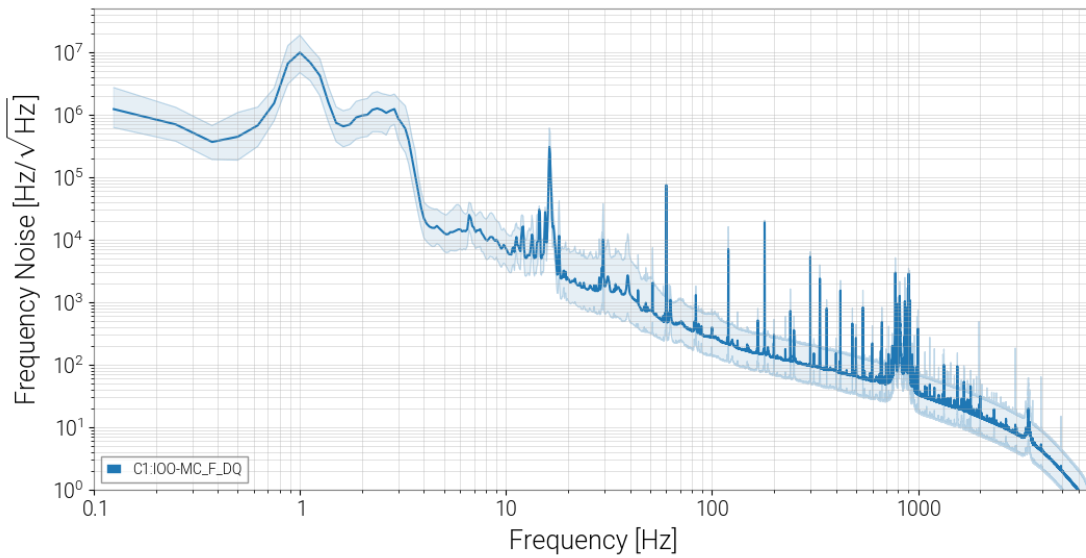
April 4th (Old IMC suspension settings)

[1301529618-1301616018, state: Locked (MC)]



May 2nd (New suspension matrices and F2A filters, old gains)

[1303948818-1304035218, state: Locked (MC)]



May 9th (New Suspension matrices and F2A filters and new gains)

[1304553618-1304640018, state: Locked (MC)]

