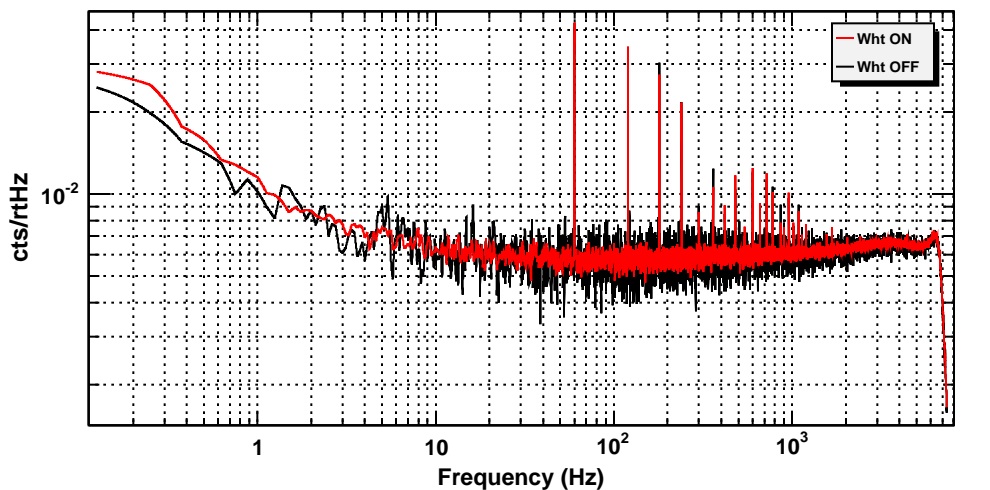


ALS channel whitening (X_I)

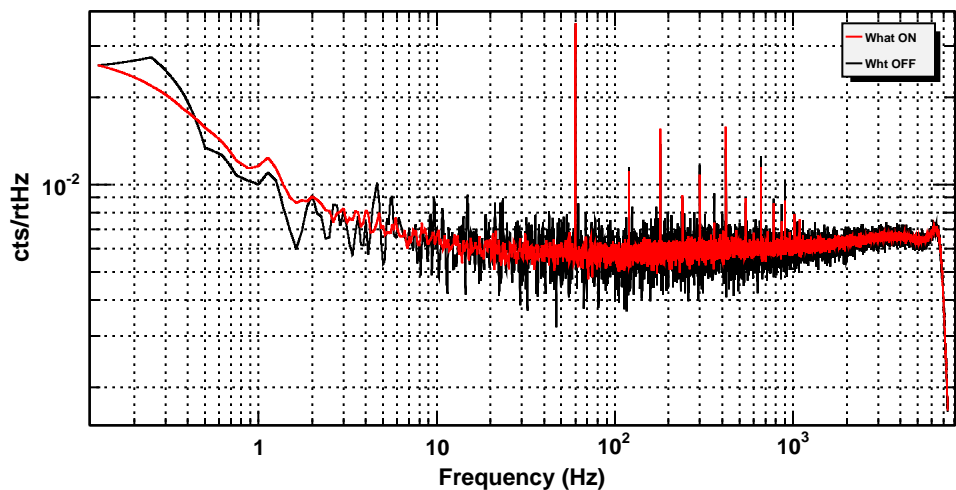


*T0=02/02/2018 21:06:02

Avg=73/Bin=5L

BW=0.187493

ALS channel whitening (Y_I)

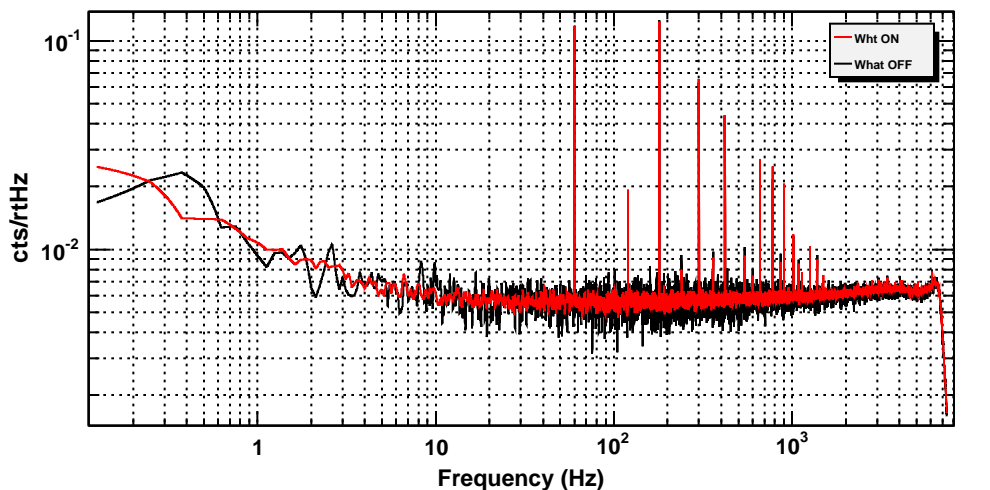


*T0=02/02/2018 21:06:02

Avg=73/Bin=5L

BW=0.187493

ALS channel whitening (X_Q)

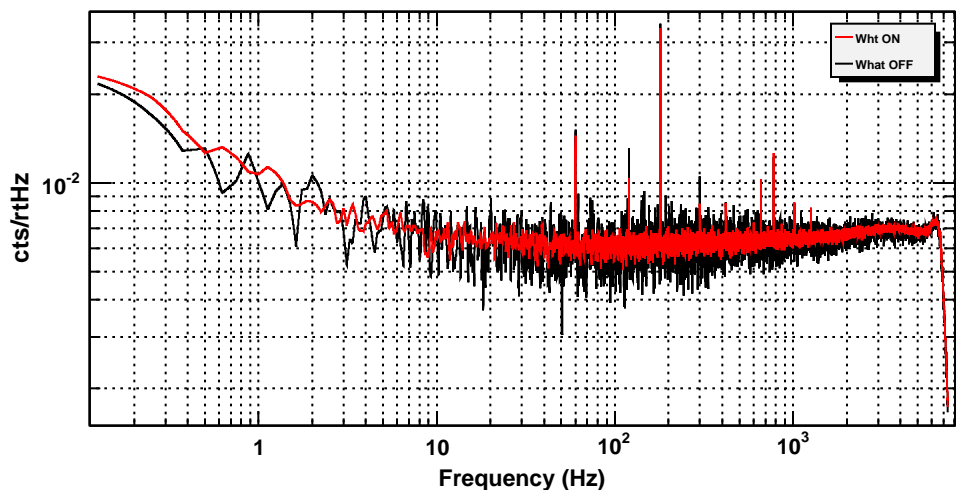


*T0=02/02/2018 21:06:02

Avg=73/Bin=5L

BW=0.187493

ALS channel whitening (Y_Q)



*T0=02/02/2018 21:06:02

Avg=73/Bin=5L

BW=0.187493