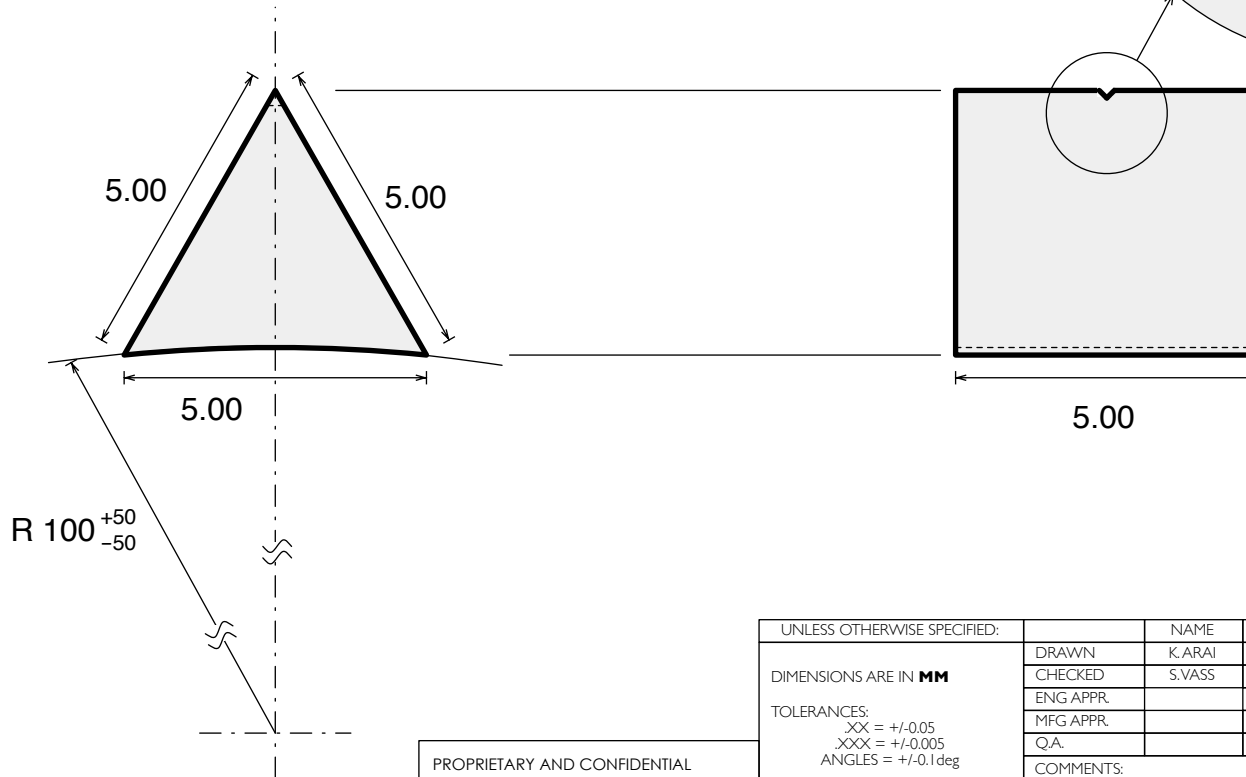


Notes:

1. Dimensions are in **mm**
2. Surface quality:
Prism sides - Scratch-Dig 40-20
V-groove sides - 5 μm grit polish
3. V-groove - to be manufactured by focused ion beam ablation or laser ablation. **The most important property on the groove is the curvature of the bottom.** A wire with the diameter of 43 μm must seat in the groove with two contact points.
4. No crystal orientation required.



V-groove
zoom up

R<0.025 or Best Effort

PROPRIETARY AND CONFIDENTIAL
THE INFORMATION CONTAINED IN THIS
DRAWING IS THE SOLE PROPERTY OF
CALIFORNIA INSTITUTE OF TECHNOLOGY.
ANY REPRODUCTION IN PART OR AS A
WHOLE WITHOUT THE WRITTEN
PERMISSION OF CALIFORNIA INSTITUTE OF
TECHNOLOGY IS PROHIBITED.

UNLESS OTHERWISE SPECIFIED:		NAME	DATE	CALTECH LIGO 40m LAB			
DIMENSIONS ARE IN MM TOLERANCES: .XX = +/-0.05 .XXX = +/-0.005 ANGLES = +/-0.1deg		DRAWN	K.ARAI	5/25/2016	TITLE: Sapphire Suspension Standoff		
		CHECKED	S.VASS	5/25/2016			
		ENG APPR.			SIZE	DWG No. DI600173	
		MFG APPR.					REV v2
		Q.A.					
COMMENTS:			SCALE:	WEIGHT:	SHEET: 1 OF 1		
MATERIAL	Sapphire Crystal						
FINISH	specified above						
DO NOT SCALE DRAWING							