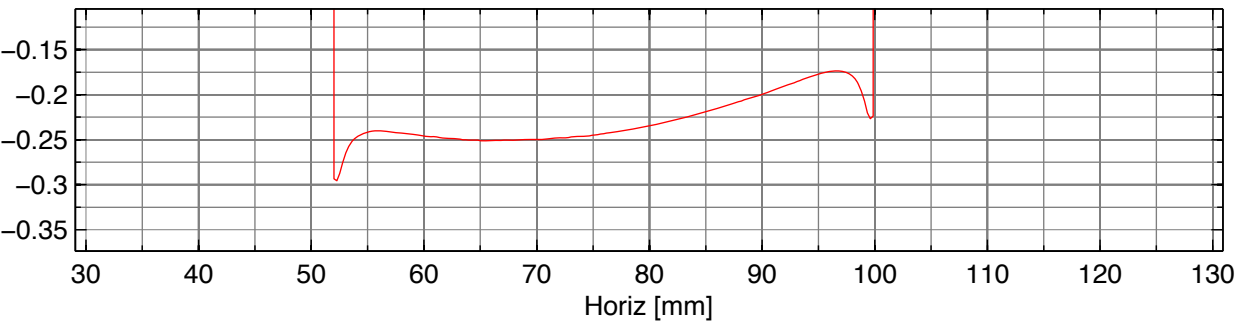
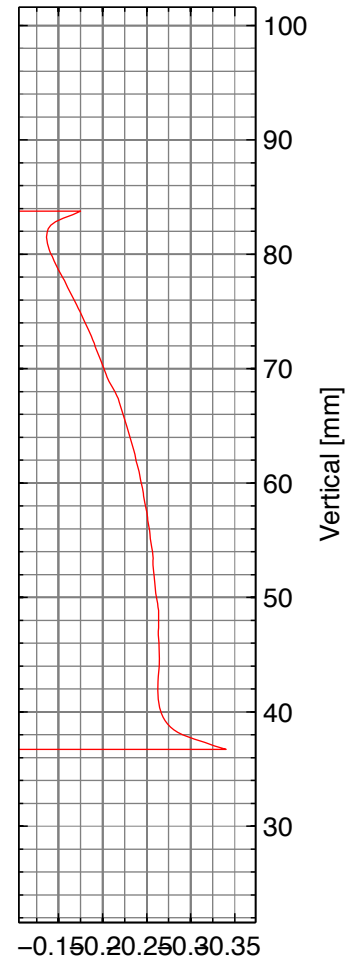
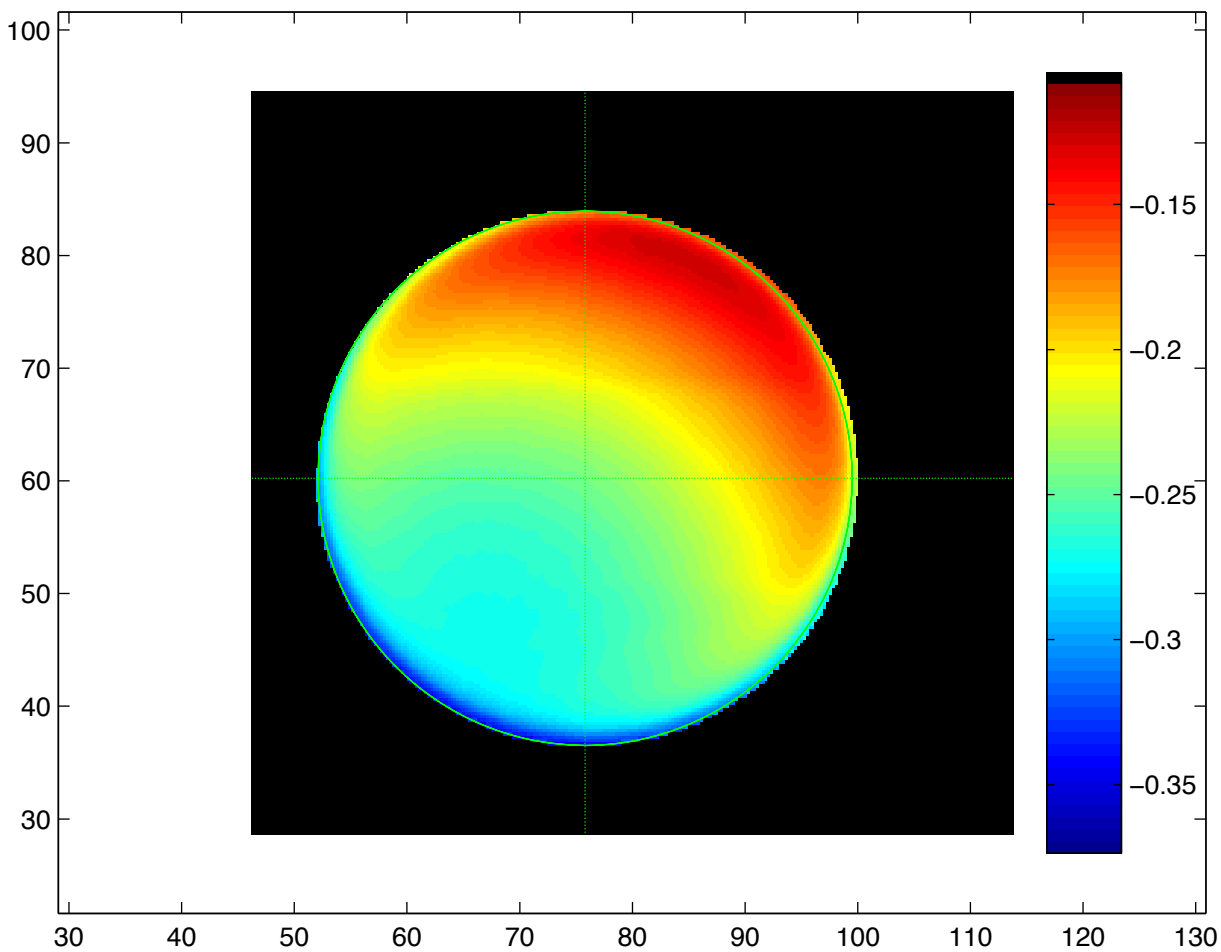
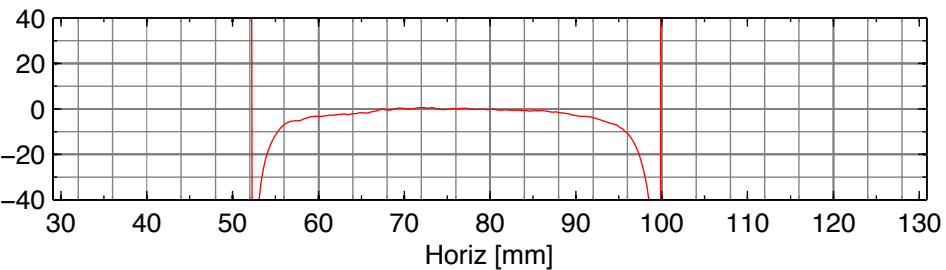
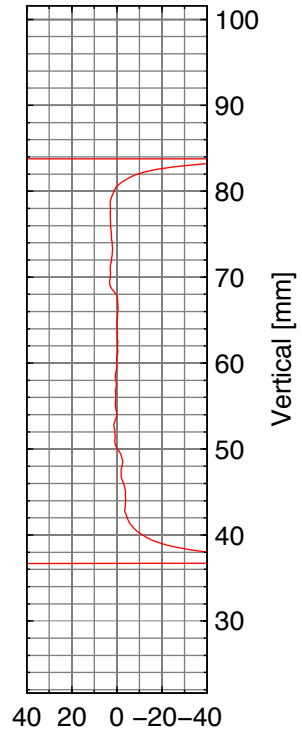
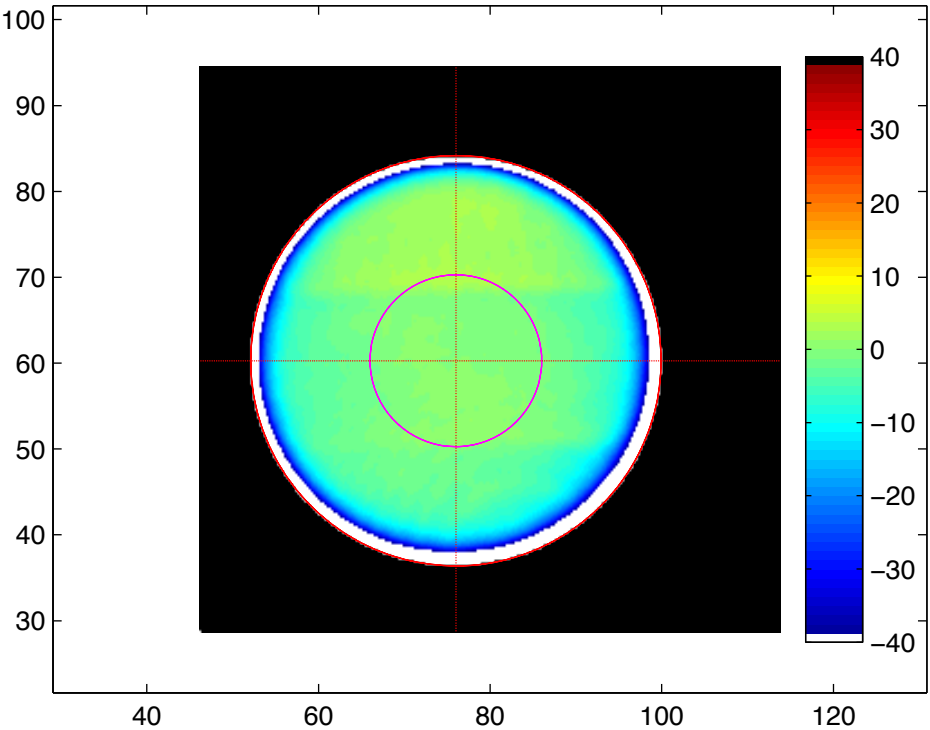


0966a: Raw phase map / phase map units in [ $\mu\text{m}$ ]



Estimated Mirror Radius: 23.7 mm  
Estimated Center: [75.805 60.2315] mm  
Peak: -0.12698  $\mu\text{m}$   
Valley: -0.35115  $\mu\text{m}$   
PV: 0.22417  $\mu\text{m}$

0966a: Phase map fitting residual / error in [nm]



Assumed mirror radius: 23.9 mm

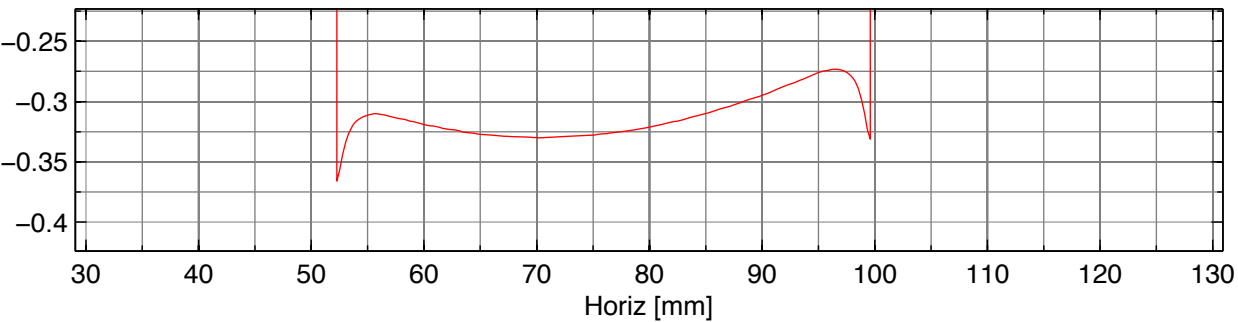
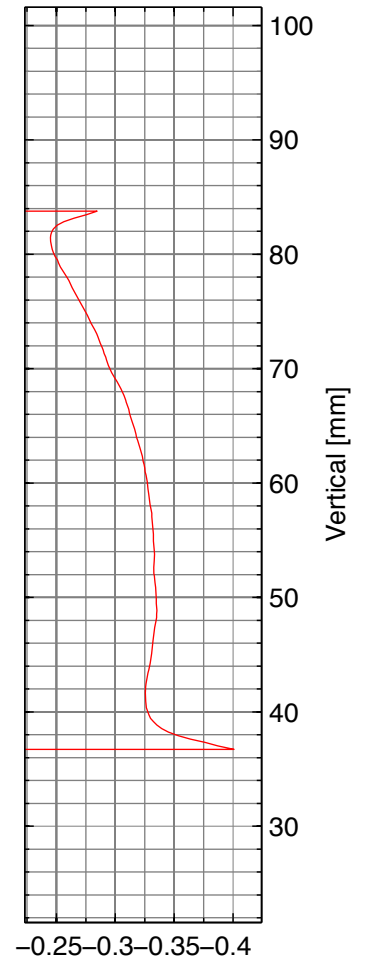
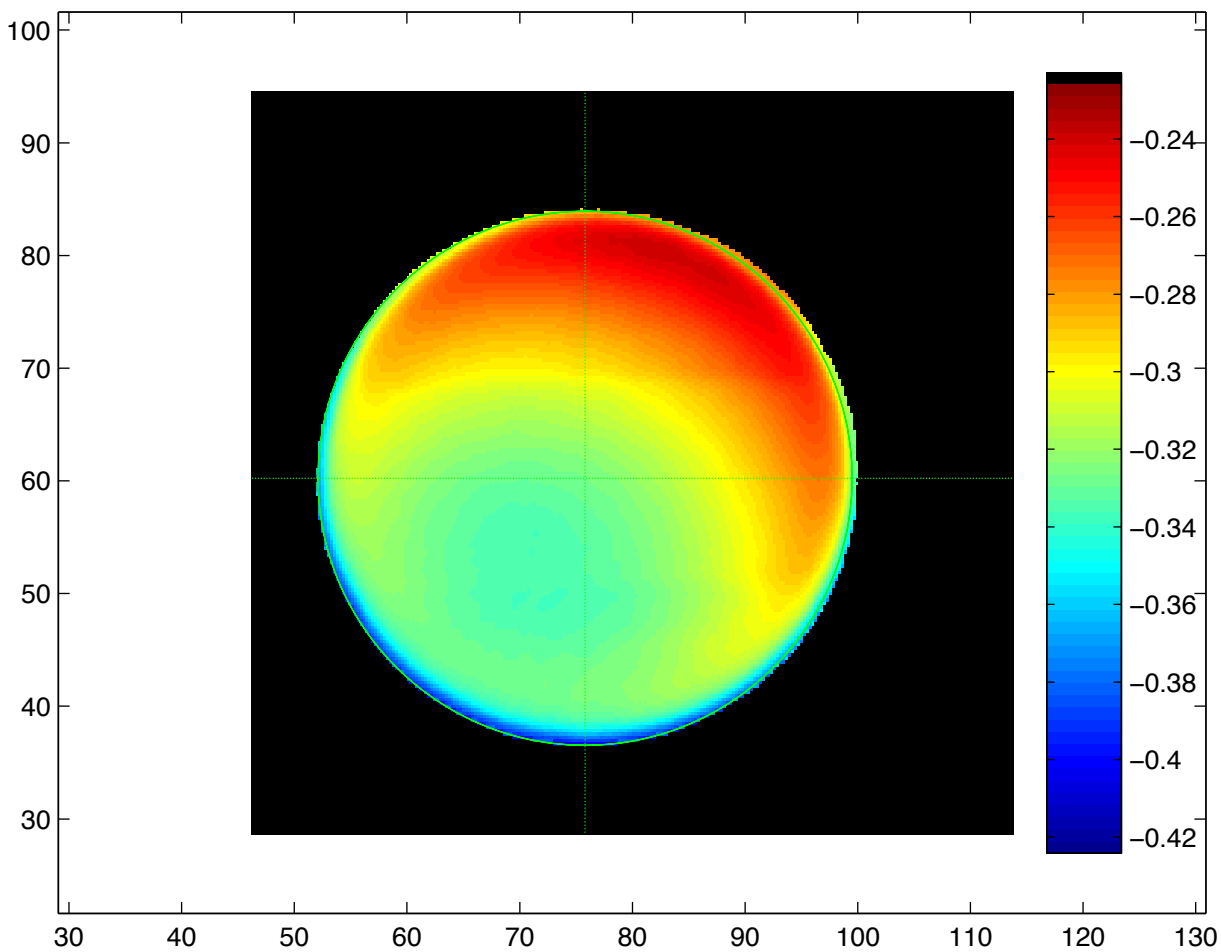
Yaw misalignment: 1.7536 urad

Pitch misalignment: 2.8733 urad

Curvature fit radius: 10 mm

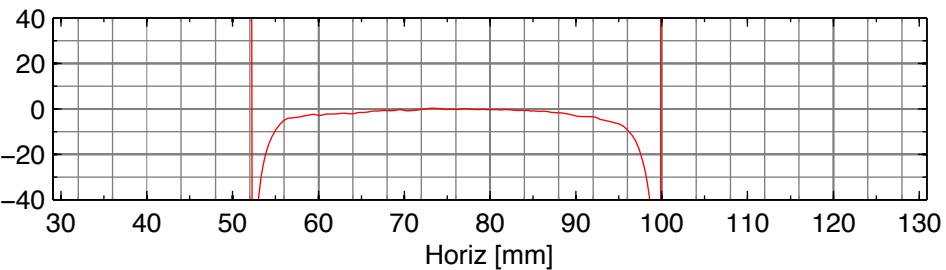
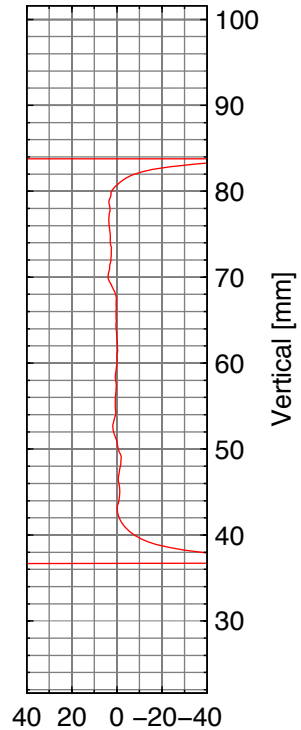
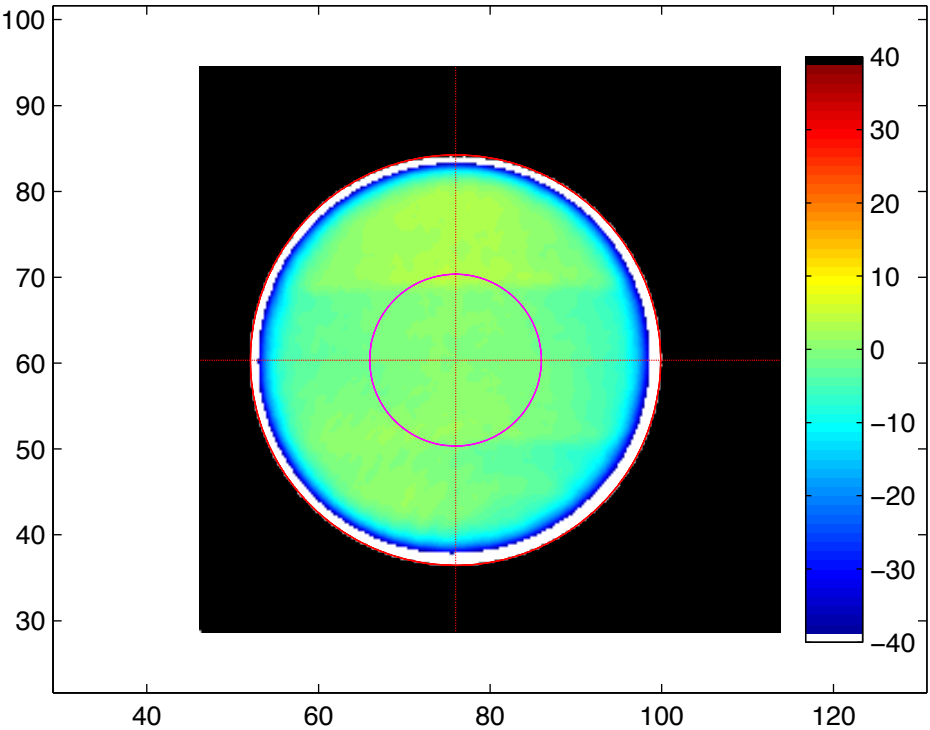
Estimated RoC: 4444.4816 m

0966b: Raw phase map / phase map units in [ $\mu\text{m}$ ]



Estimated Mirror Radius: 23.7 mm  
Estimated Center: [75.7974 60.2343 ] mm  
Peak: -0.23967  $\mu\text{m}$   
Valley: -0.40736  $\mu\text{m}$   
PV: 0.16769  $\mu\text{m}$

0966b: Phase map fitting residual / error in [nm]



Assumed mirror radius: 23.9 mm

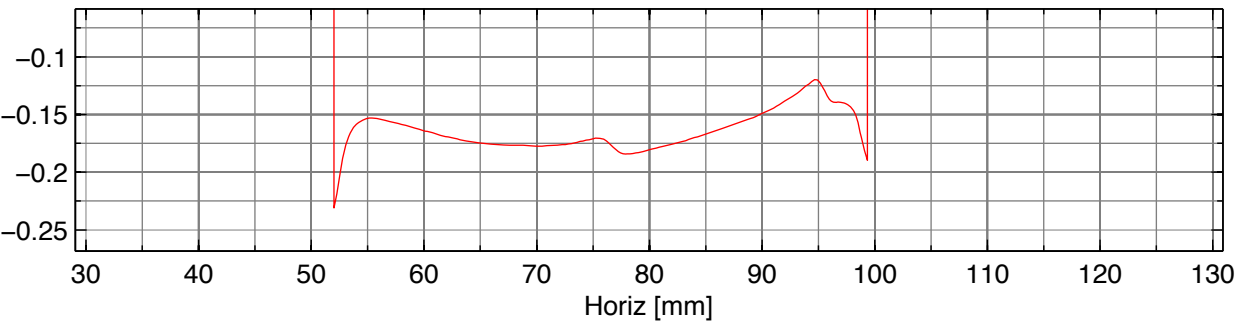
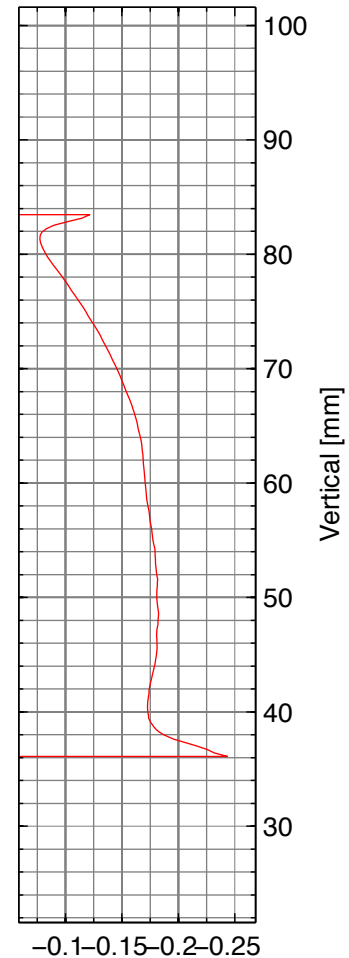
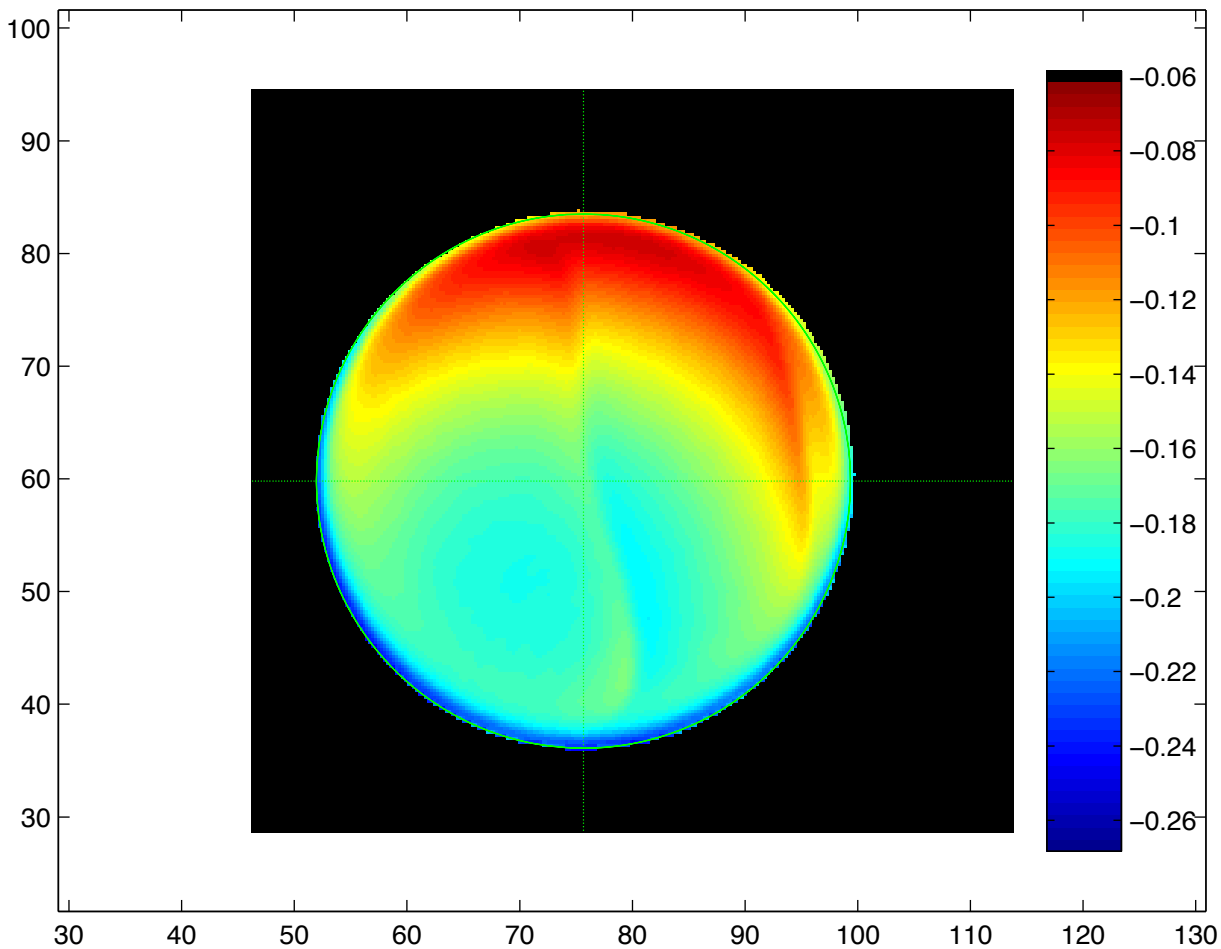
Yaw misalignment: 1.021 urad

Pitch misalignment: 1.8202 urad

Curvature fit radius: 10 mm

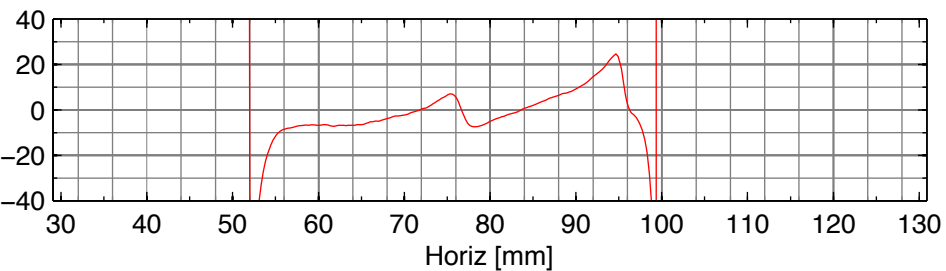
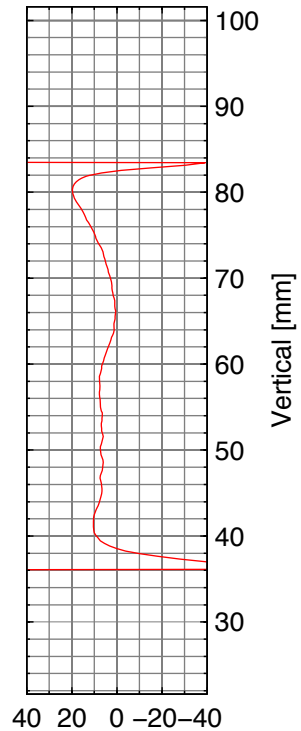
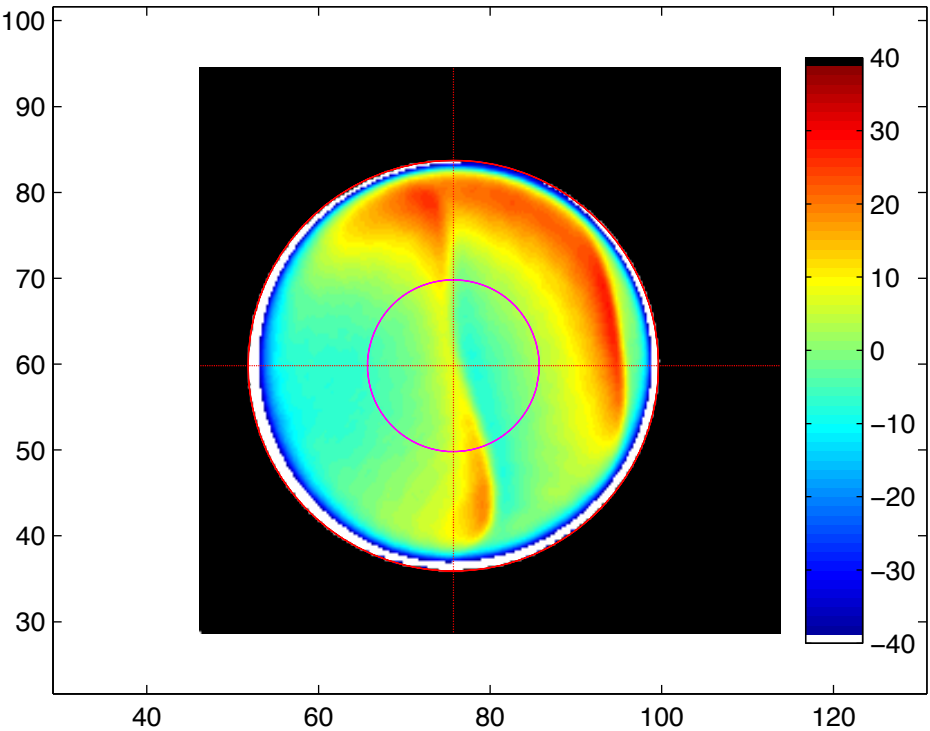
Estimated RoC: 4763.9411 m

0997a: Raw phase map / phase map units in [ $\mu\text{m}$ ]



Estimated Mirror Radius: 23.7 mm  
Estimated Center: [75.656 59.7988 ] mm  
Peak: -0.075896  $\mu\text{m}$   
Valley: -0.25078  $\mu\text{m}$   
PV: 0.17489  $\mu\text{m}$

0997a: Phase map fitting residual / error in [nm]



Assumed mirror radius: 23.9 mm

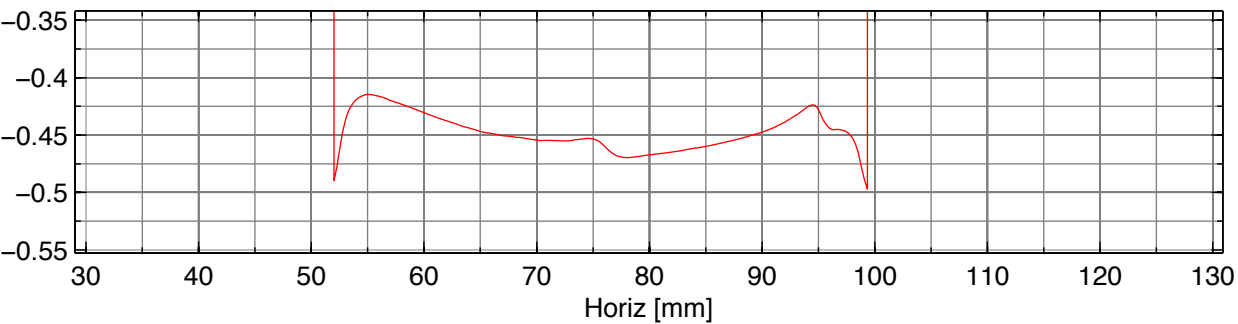
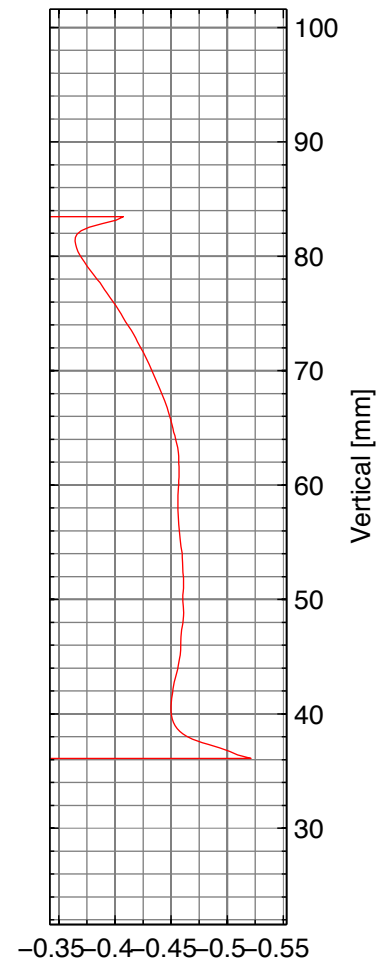
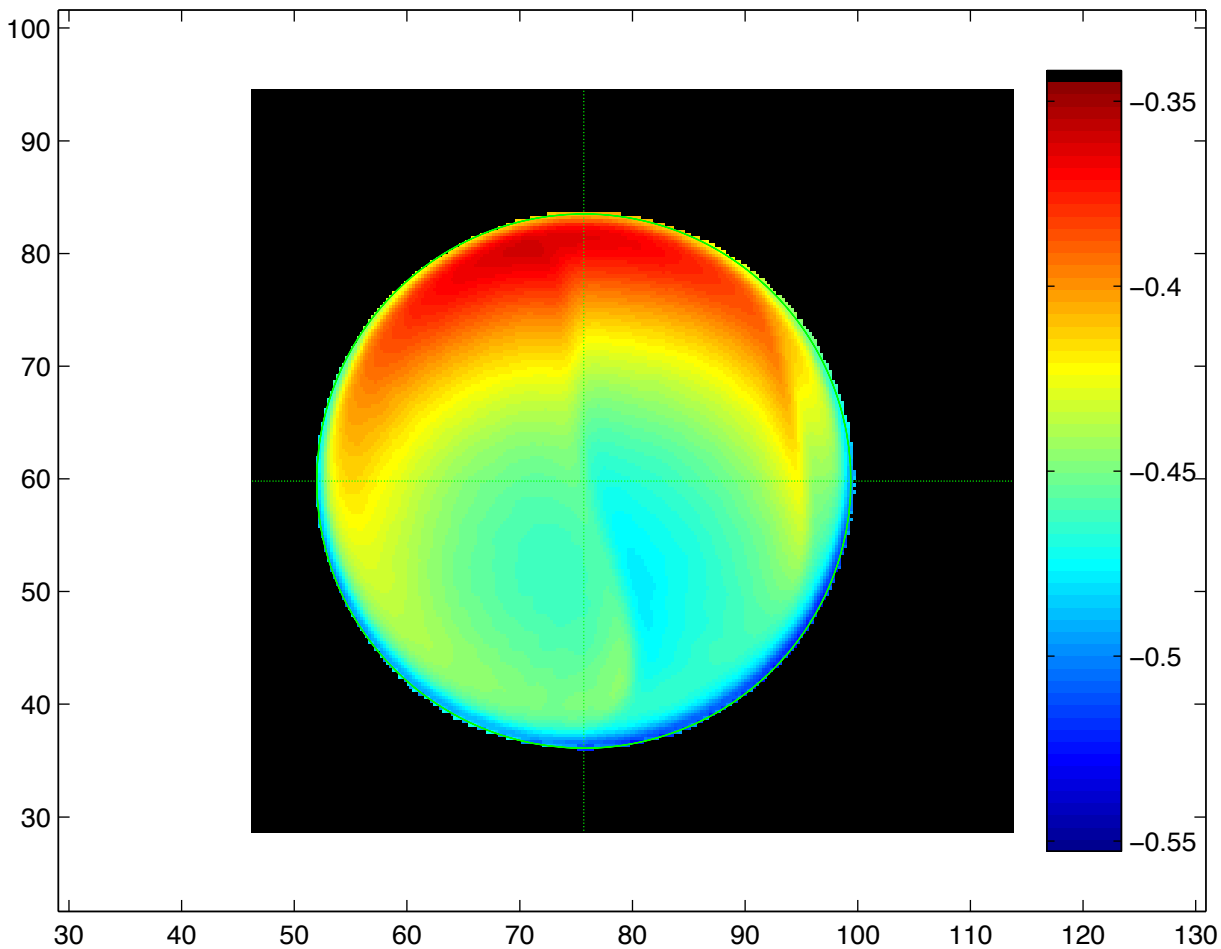
Yaw misalignment: 0.086084 urad

Pitch misalignment: 1.9601 urad

Curvature fit radius: 10 mm

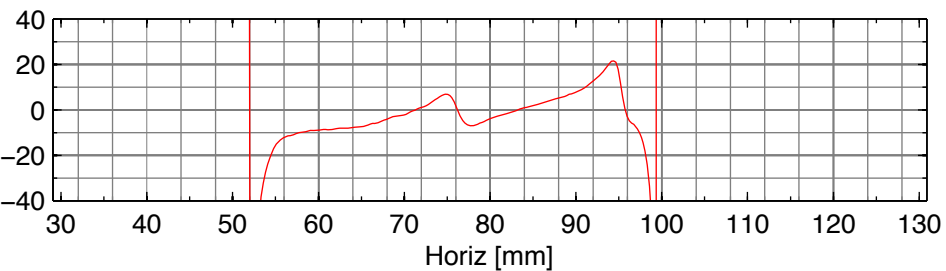
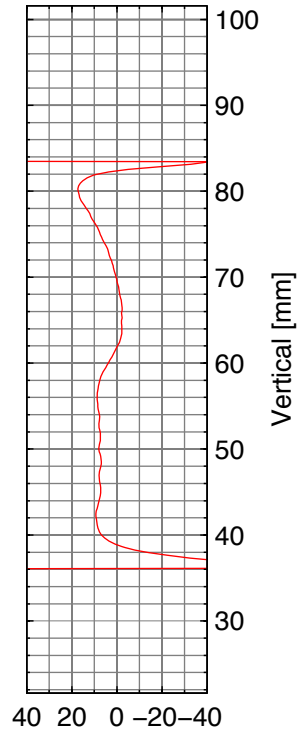
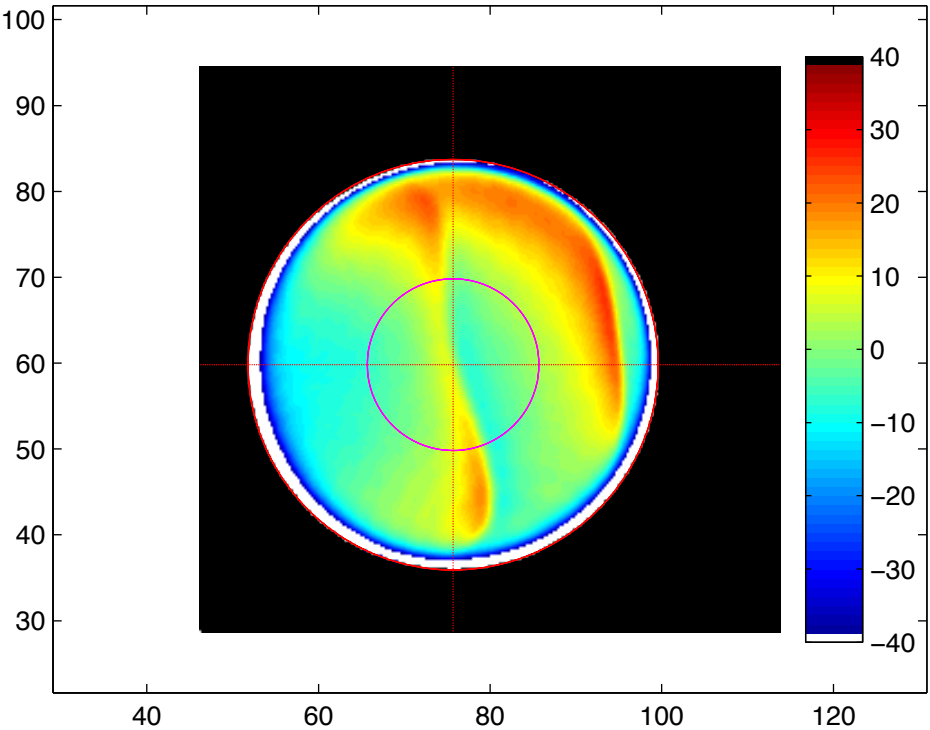
Estimated RoC: 5739.956 m

0997b: Raw phase map / phase map units in [ $\mu\text{m}$ ]



Estimated Mirror Radius: 23.7 mm  
Estimated Center: [75.6885 59.8058 ] mm  
Peak: -0.35932  $\mu\text{m}$   
Valley: -0.53514  $\mu\text{m}$   
PV: 0.17582  $\mu\text{m}$

0997b: Phase map fitting residual / error in [nm]



Assumed mirror radius: 23.9 mm

Yaw misalignment:  $-0.98592$  urad

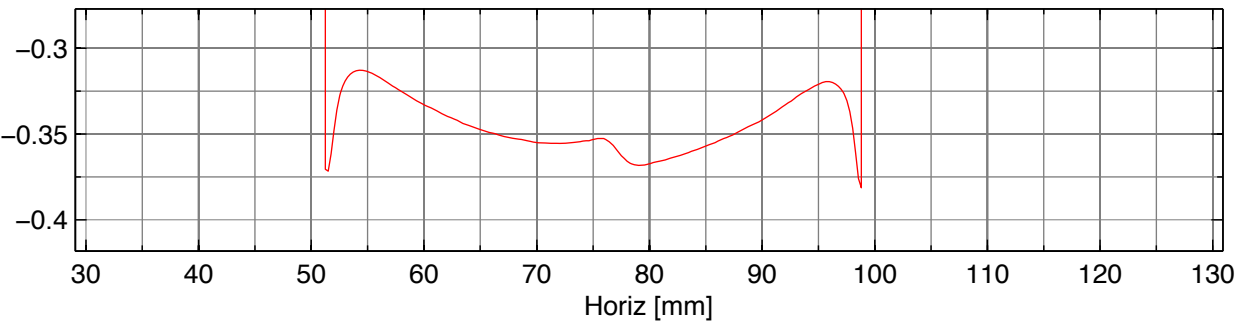
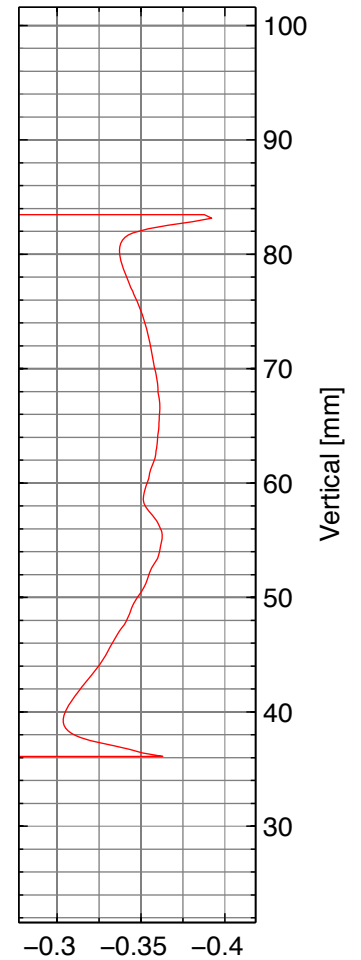
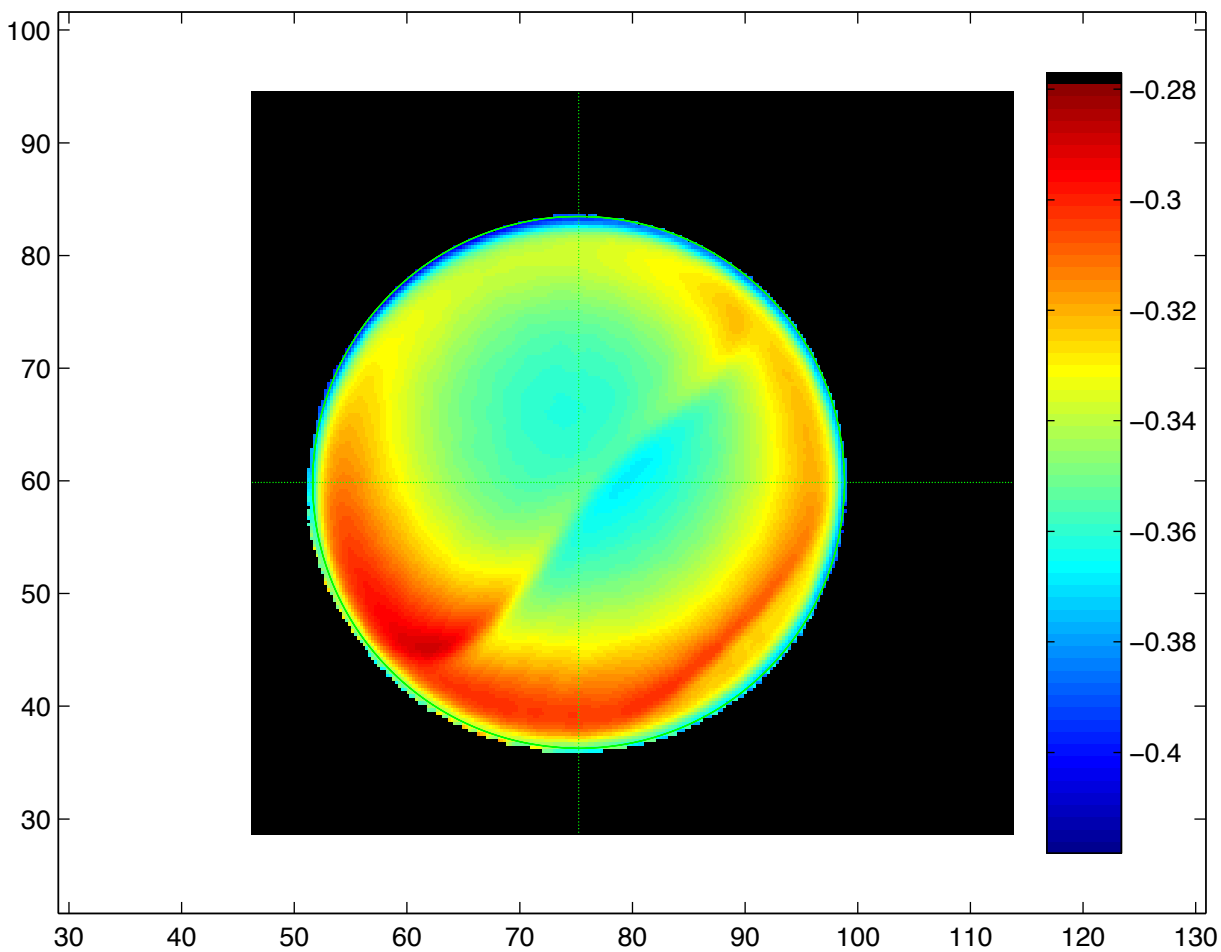
Pitch misalignment:  $1.7181$  urad

Curvature fit radius: 10 mm

Estimated RoC: 5159.8315 m

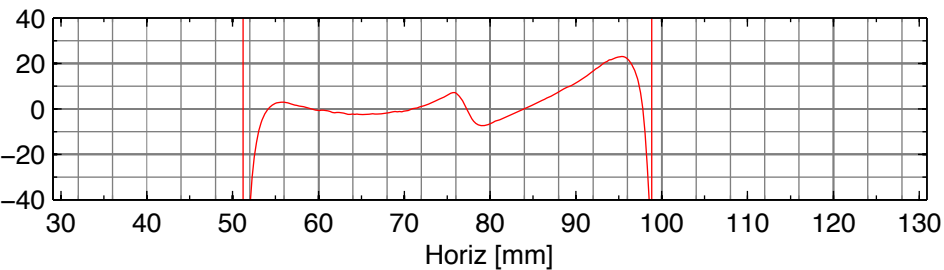
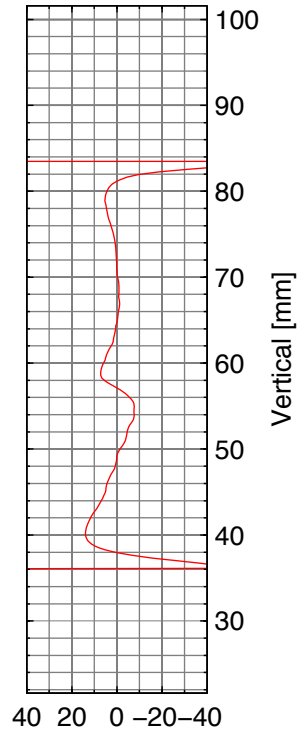
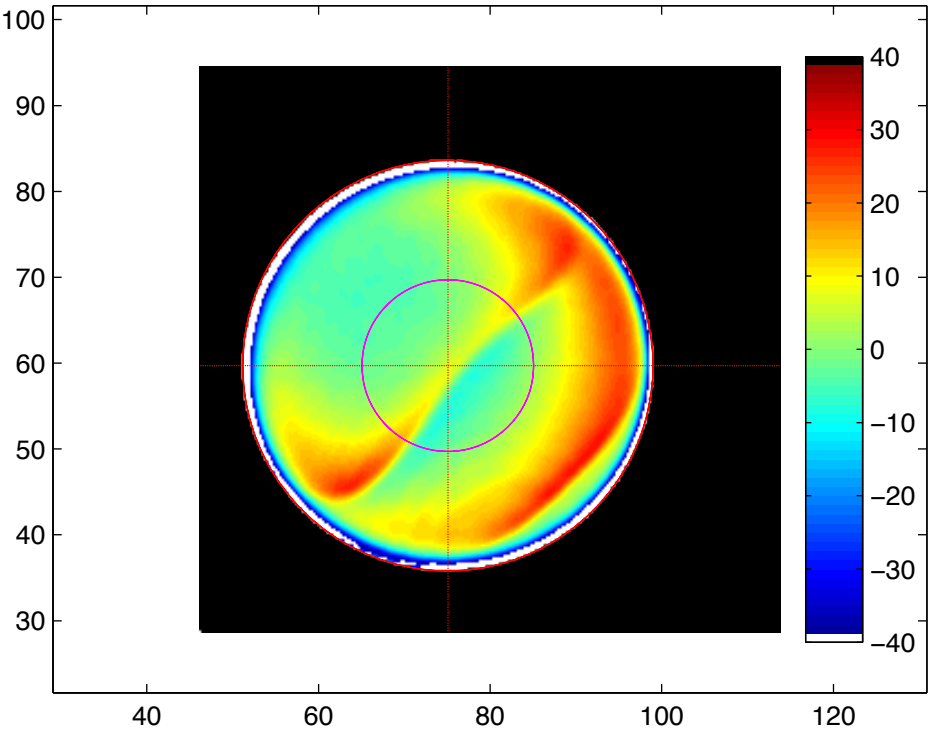


0997c: Raw phase map / phase map units in [ $\mu\text{m}$ ]



Estimated Mirror Radius: 23.6 mm  
Estimated Center: [75.2291 59.8659 ] mm  
Peak: -0.28877  $\mu\text{m}$   
Valley: -0.40646  $\mu\text{m}$   
PV: 0.11769  $\mu\text{m}$

0997c: Phase map fitting residual / error in [nm]



Assumed mirror radius: 23.9 mm

Yaw misalignment:  $-0.68341$  urad

Pitch misalignment:  $-0.61791$  urad

Curvature fit radius: 10 mm

Estimated RoC: 6831.8131 m