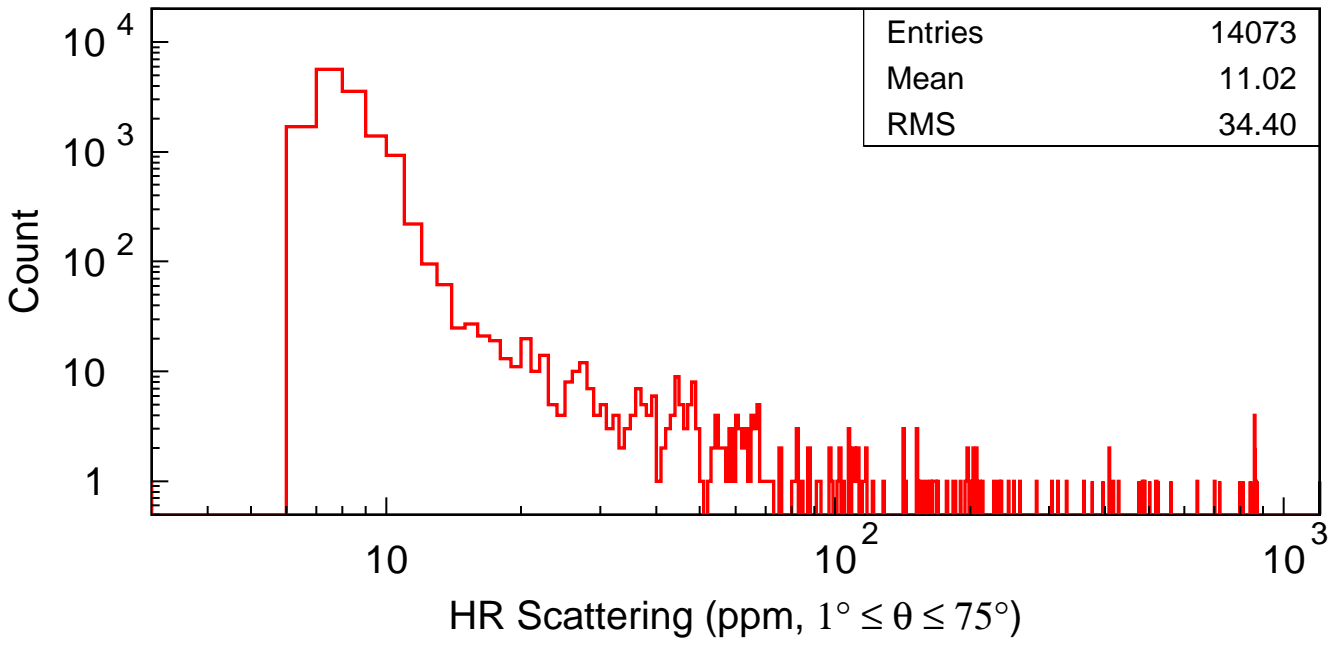
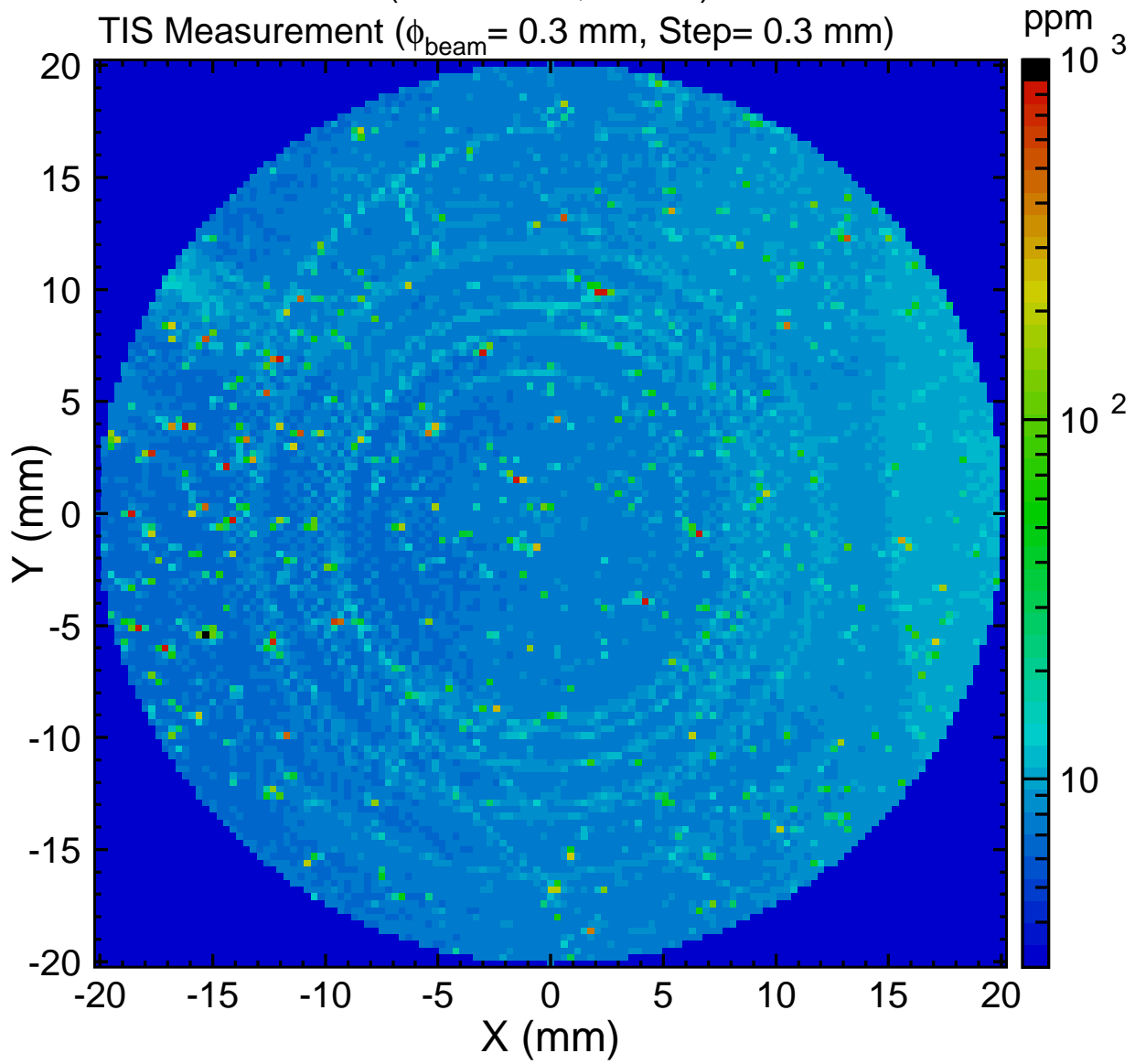


ATF 3" HR Mirror (ITMU-sn01, ↑@Y+)

TIS Measurement ($\phi_{\text{beam}} = 0.3 \text{ mm}$, Step = 0.3 mm)



ATF 3" HR Mirror (ITMU-sn02, \uparrow @Y+)

TIS Measurement ($\phi_{\text{beam}} = 0.3 \text{ mm}$, Step= 0.3 mm)

