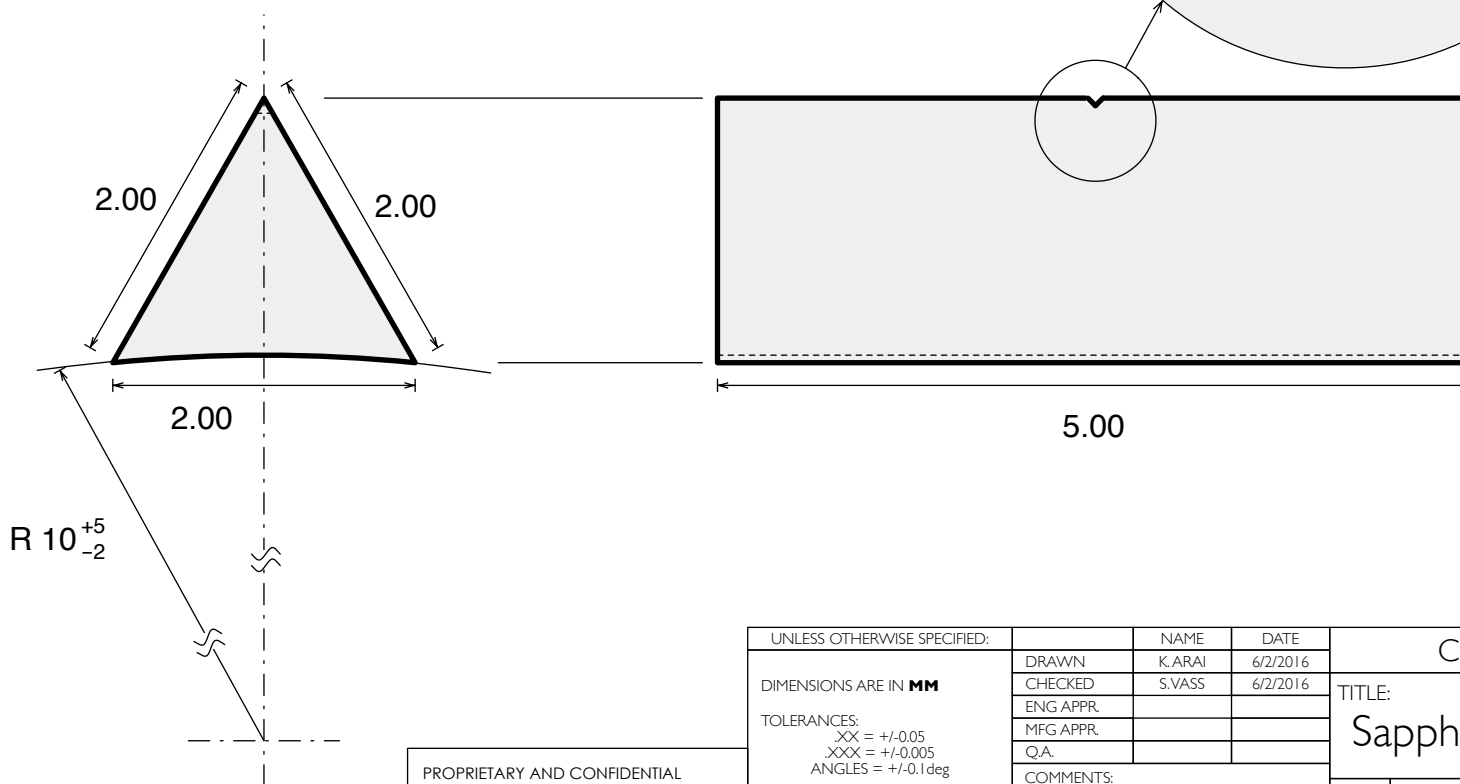


Notes:

1. Dimensions are in **mm**
2. Surface quality:
Prism sides - Scratch-Dig 40-20
V-groove sides - 5 μ m grit polish
3. V-groove - to be manufactured by focused ion beam ablation or laser ablation. **The most important property on the groove is the curvature of the bottom.** A wire with the diameter of 43 μ m must seat in the groove with two contact points.
4. No crystal orientation required.



PROPRIETARY AND CONFIDENTIAL
THE INFORMATION CONTAINED IN THIS
DRAWING IS THE SOLE PROPERTY OF
CALIFORNIA INSTITUTE OF TECHNOLOGY.
ANY REPRODUCTION IN PART OR AS A
WHOLE WITHOUT THE WRITTEN
PERMISSION OF CALIFORNIA INSTITUTE OF
TECHNOLOGY IS PROHIBITED.

UNLESS OTHERWISE SPECIFIED:	
DIMENSIONS ARE IN MM	
TOLERANCES:	
.XX = +/-0.05	
.XXX = +/-0.005	
ANGLES = +/-0.1deg	
MATERIAL	Sapphire Crystal
FINISH	specified above
DO NOT SCALE DRAWING	

	NAME	DATE
DRAWN	K.ARAI	6/2/2016
CHECKED	S.VASS	6/2/2016
ENG APPR.		
MFG APPR.		
Q.A.		
COMMENTS:		

CALTECH LIGO 40m LAB		
TITLE: Sapphire Suspension Standoff		
SIZE A	DWG No. DI600173	REV v3
SCALE:	WEIGHT:	SHEET: 1 OF 1