

Intensity Noise with NE, 10 Hz to 2 MHz (% rms)

Waist Location (inside laser head)(mm)

Laser Head Size (W x H x L)

150
(5.9)

Laser Head Weight

3.1

Laser Controller Size (W x H x L)

340
(13.4)

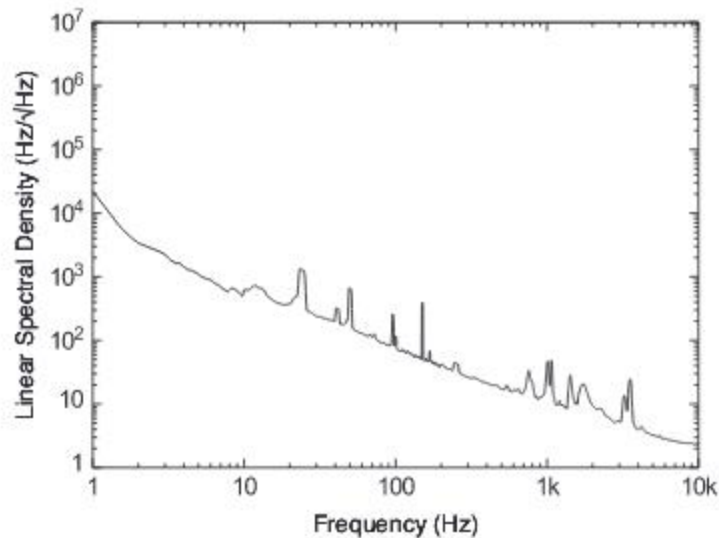
Laser Controller Weight

9.1

Options

- 1 Optional Noise eater (NE) available at time of order.
- 2 Optional fiber coupling (FC) available at time of order.
Coupling efficiency > 60%.

Frequency Noise⁵



Tuning Standard Geometry

