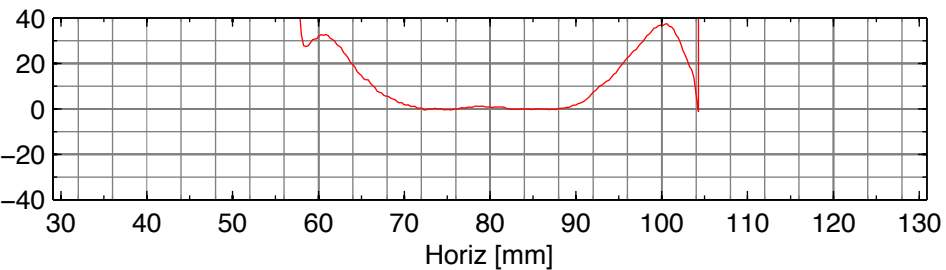
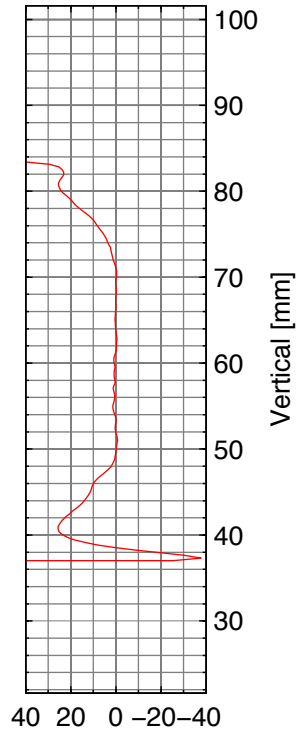
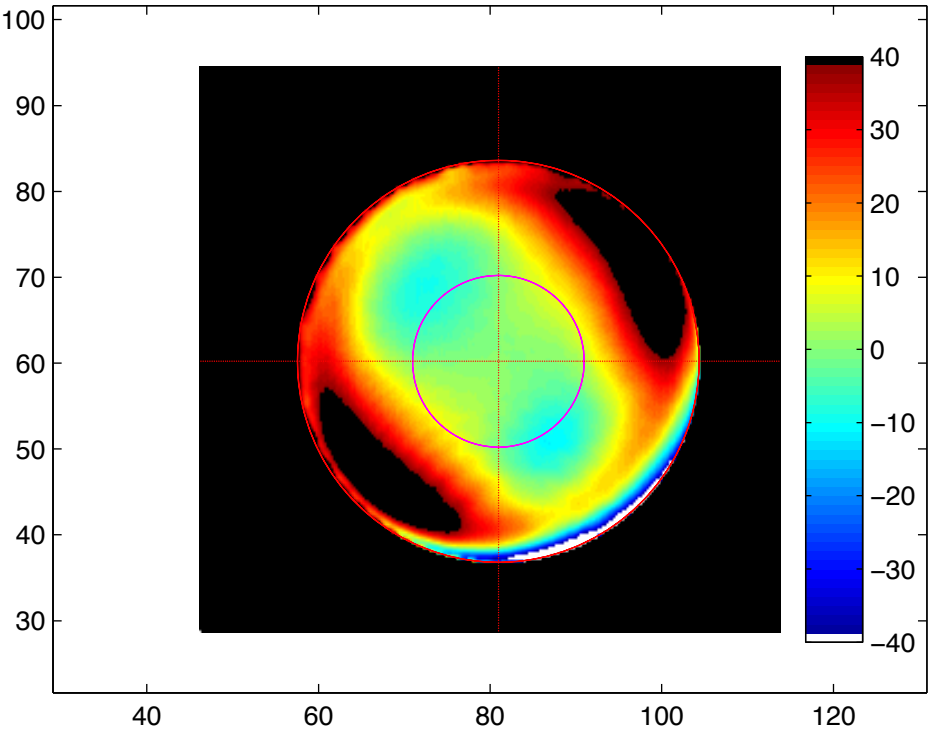


GH_A_0864: Phase map fitting residual / error in [nm]



Assumed mirror radius: 23.4 mm

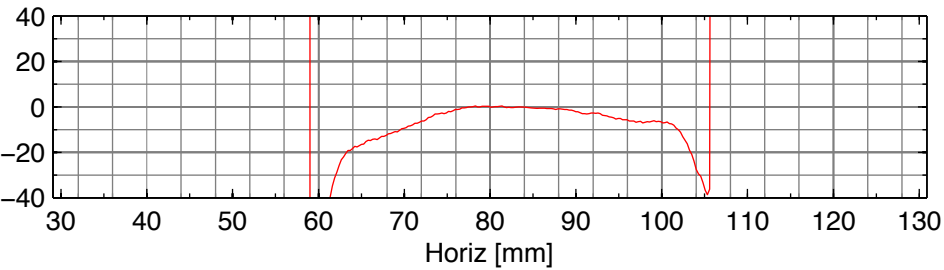
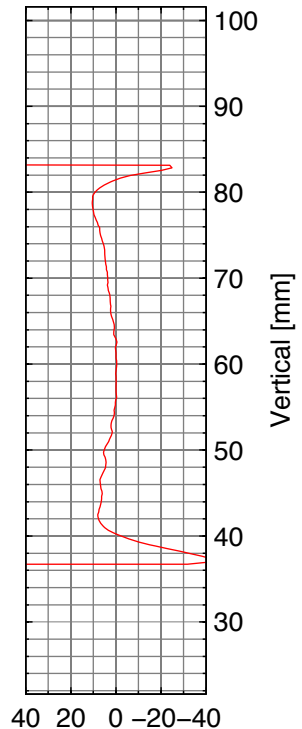
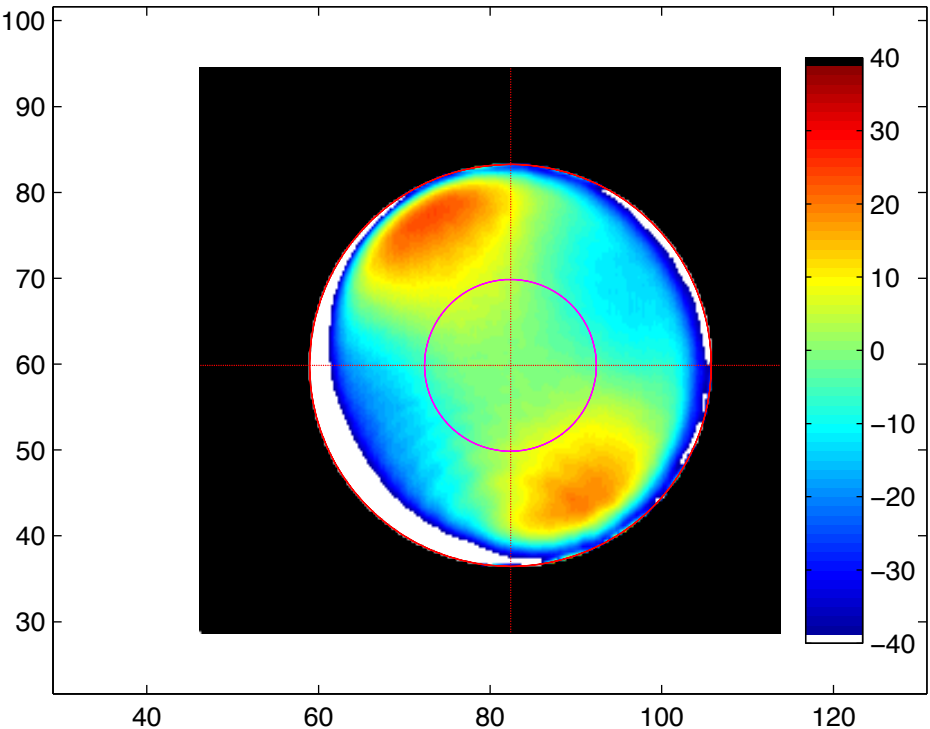
Yaw misalignment: 4.3089 urad

Pitch misalignment: 2.0734 urad

Curvature fit radius: 10 mm

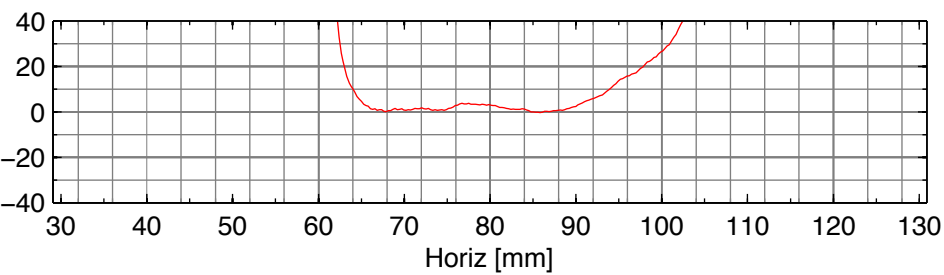
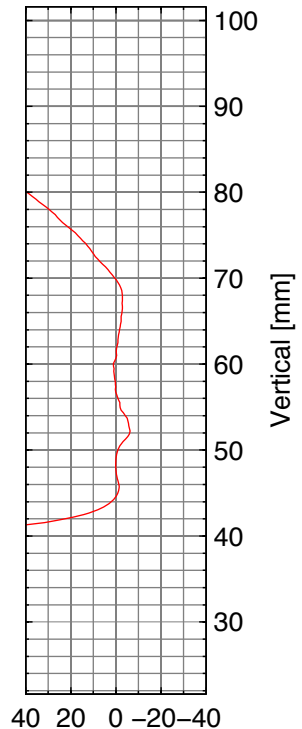
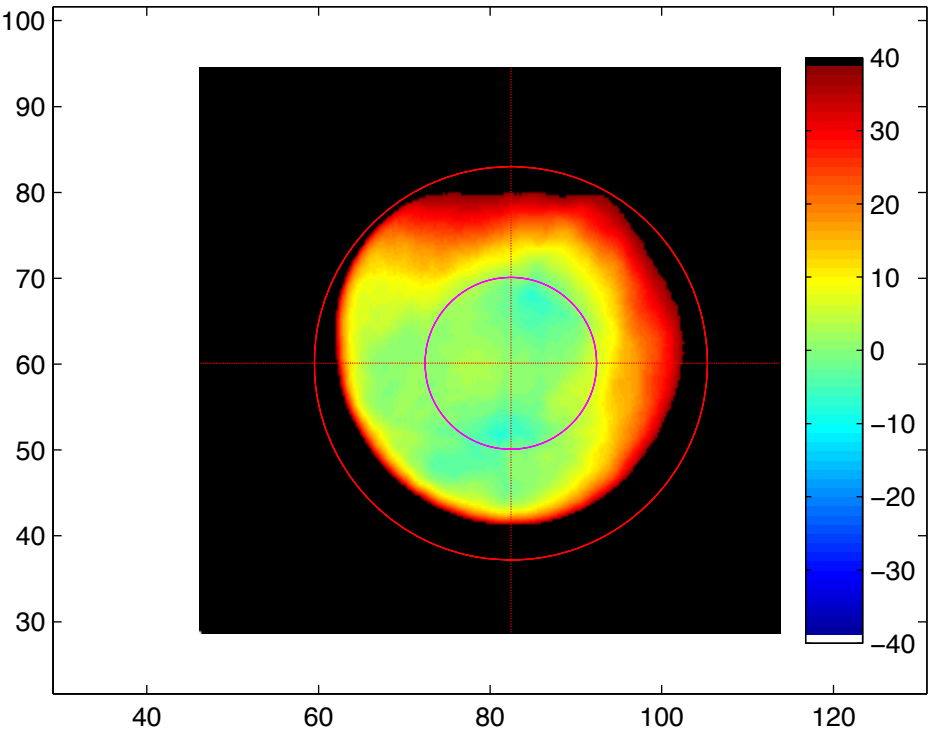
Estimated RoC: -505.1816 m

GH_B_0884: Phase map fitting residual / error in [nm]



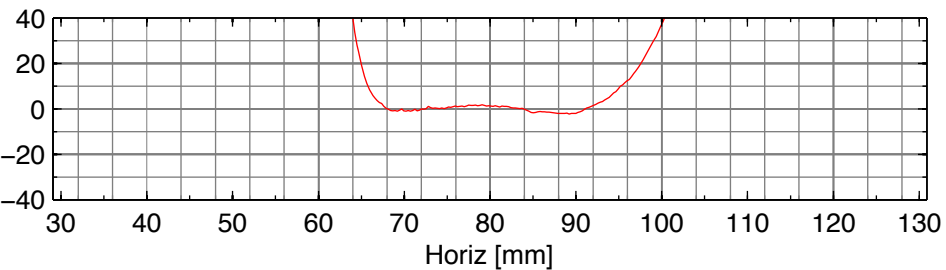
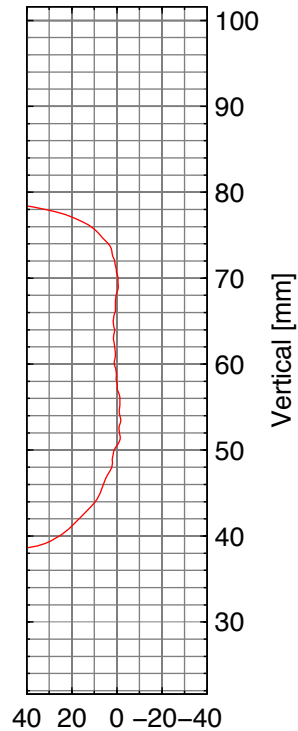
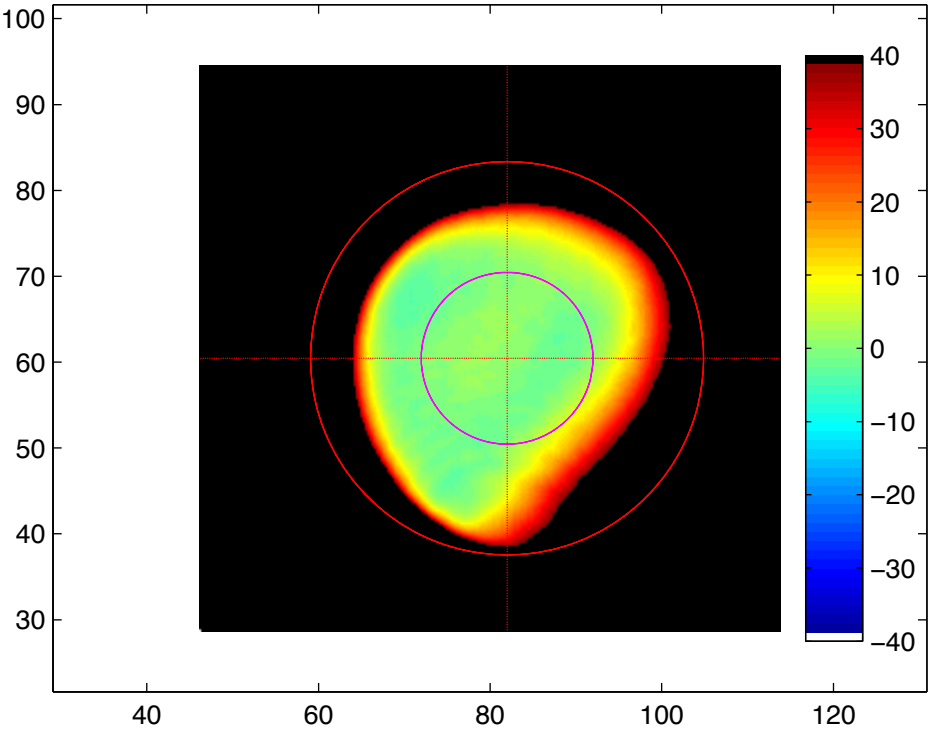
Assumed mirror radius: 23.4 mm
Yaw misalignment: 1.8601 urad
Pitch misalignment: 0.22068 urad
Curvature fit radius: 10 mm
Estimated RoC: -683.6294 m

sn1Laseroptik: Phase map fitting residual / error in [nm]



Assumed mirror radius: 22.9 mm
Yaw misalignment: 3.2046 urad
Pitch misalignment: 2.9774 urad
Curvature fit radius: 10 mm
Estimated RoC: -652.7485 m

sn2Laseroptik: Phase map fitting residual / error in [nm]



Assumed mirror radius: 22.9 mm

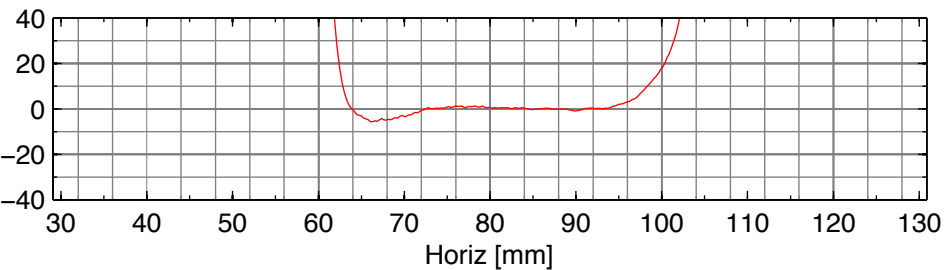
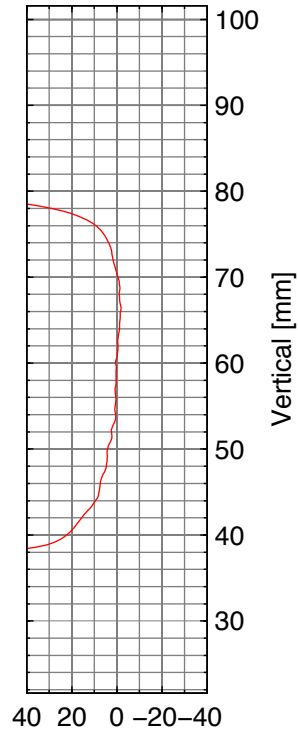
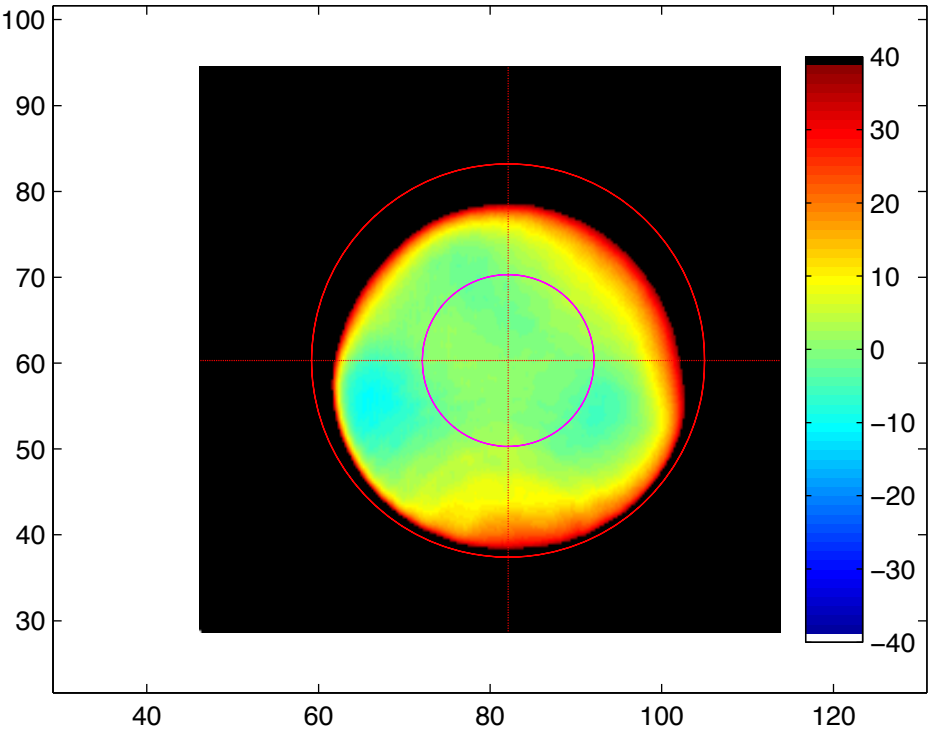
Yaw misalignment: 6.1842 urad

Pitch misalignment: 0.12512 urad

Curvature fit radius: 10 mm

Estimated RoC: -572.6245 m

sn3Laseroptik: Phase map fitting residual / error in [nm]



Assumed mirror radius: 22.9 mm

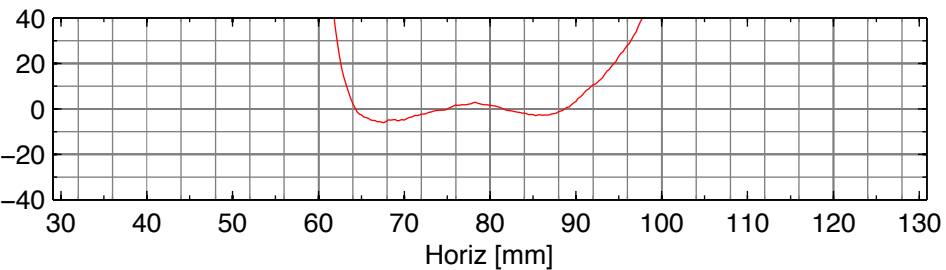
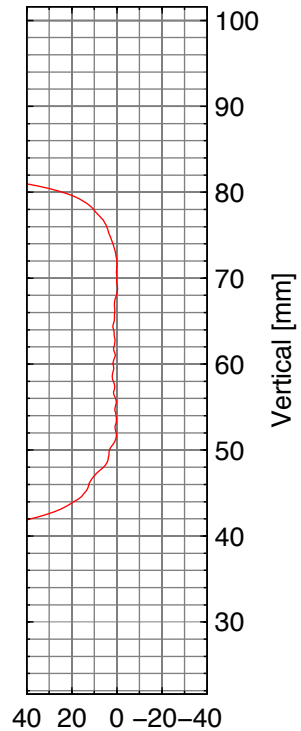
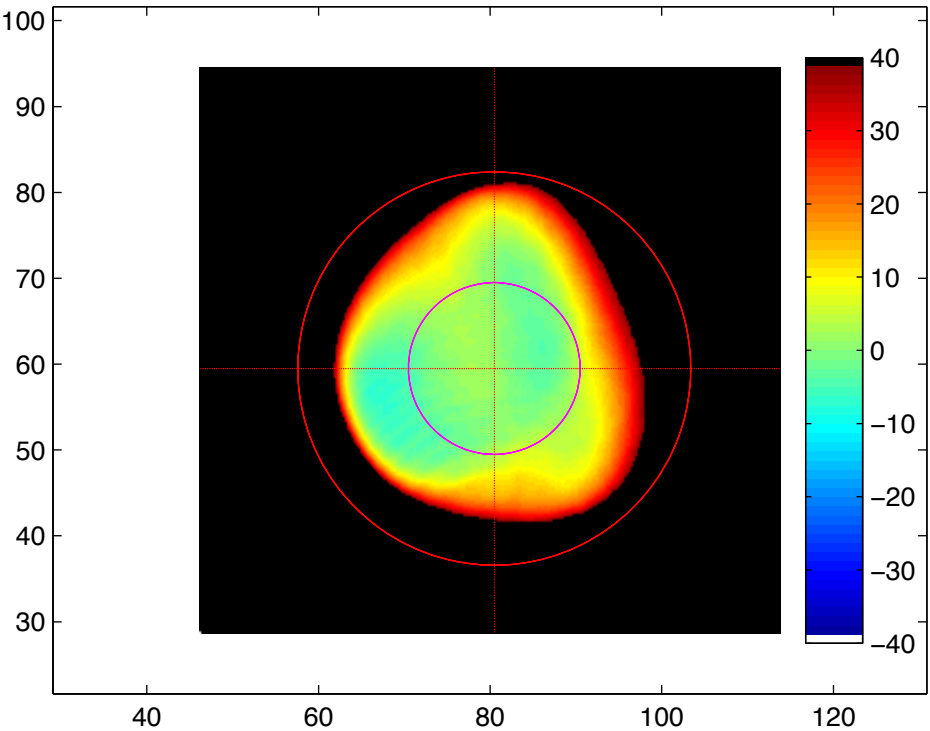
Yaw misalignment: 7.4076 urad

Pitch misalignment: -1.8453 urad

Curvature fit radius: 10 mm

Estimated RoC: -634.999 m

sn4Laseroptik: Phase map fitting residual / error in [nm]



Assumed mirror radius: 22.9 mm

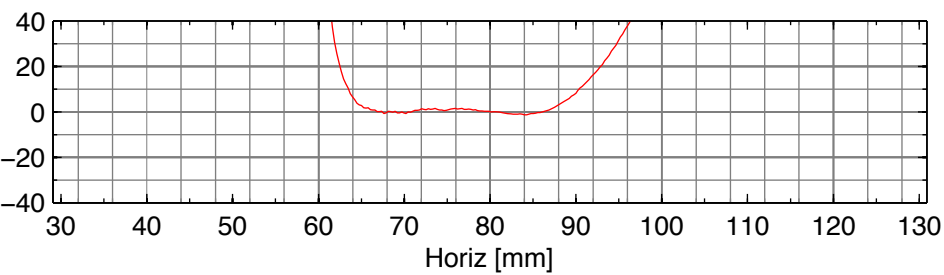
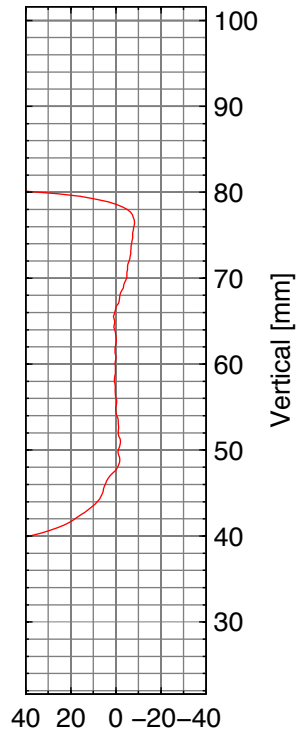
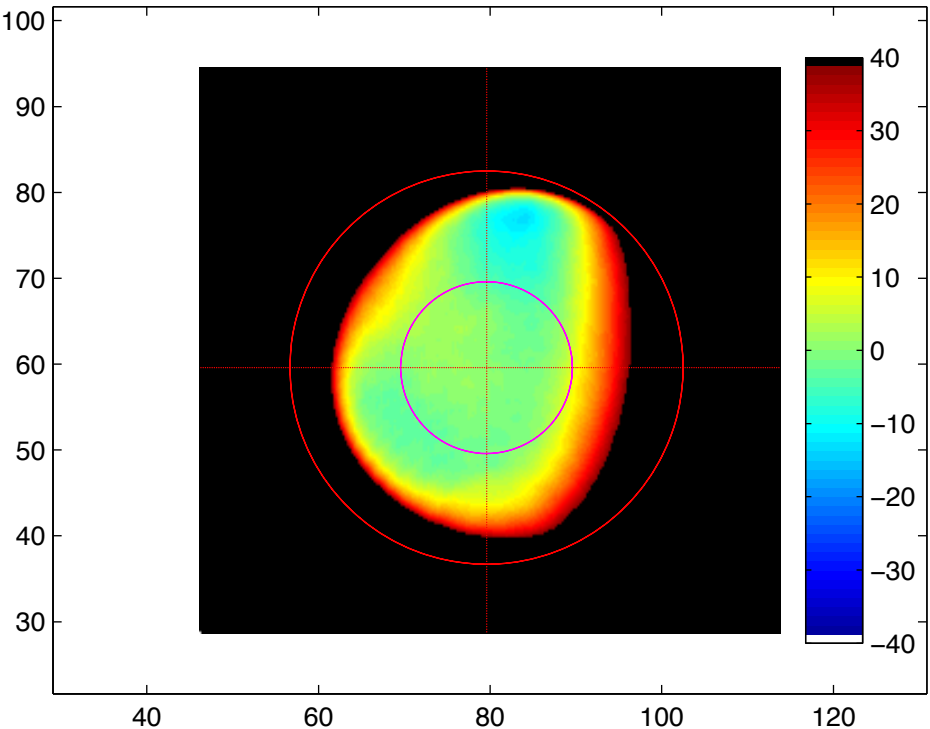
Yaw misalignment: -4.9031 urad

Pitch misalignment: 2.2413 urad

Curvature fit radius: 10 mm

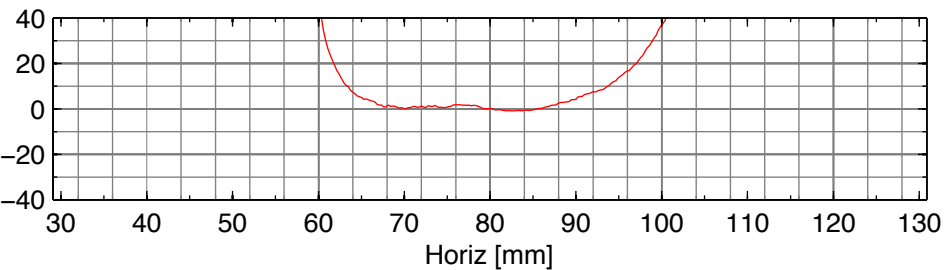
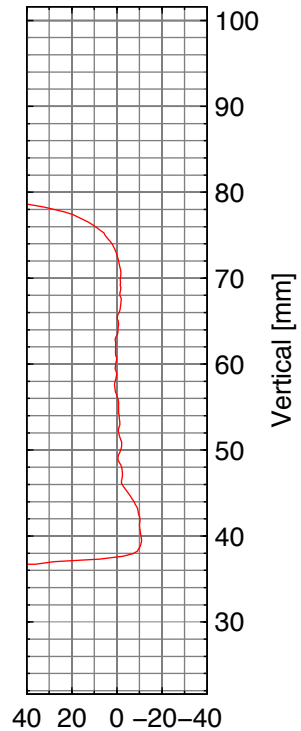
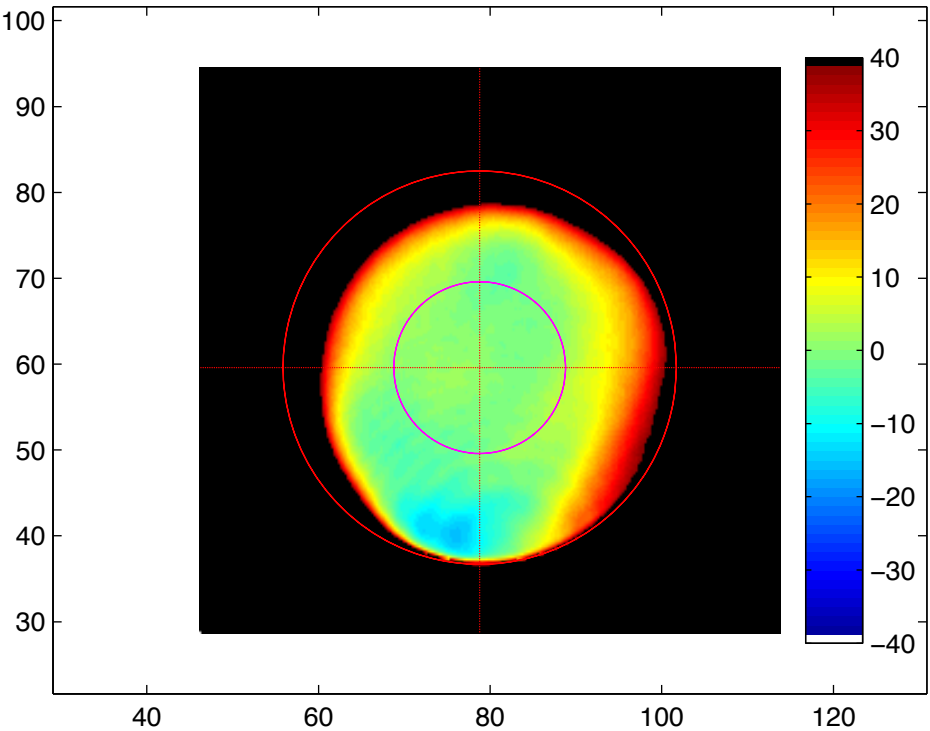
Estimated RoC: -574.6492 m

sn5Laseroptik: Phase map fitting residual / error in [nm]



Assumed mirror radius: 22.9 mm
Yaw misalignment: 6.7958 urad
Pitch misalignment: -9.0653 urad
Curvature fit radius: 10 mm
Estimated RoC: -594.2747 m

sn6Laseroptik: Phase map fitting residual / error in [nm]



Assumed mirror radius: 22.9 mm

Yaw misalignment: 0.99431 urad

Pitch misalignment: -0.22279 urad

Curvature fit radius: 10 mm

Estimated RoC: -630.2103 m