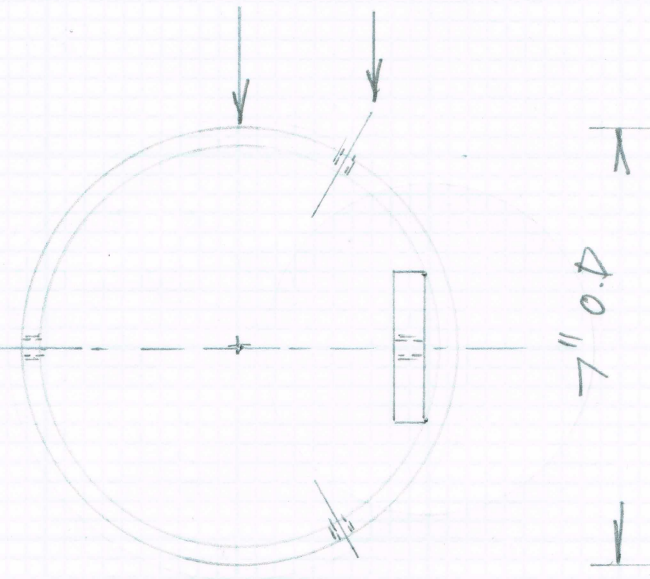
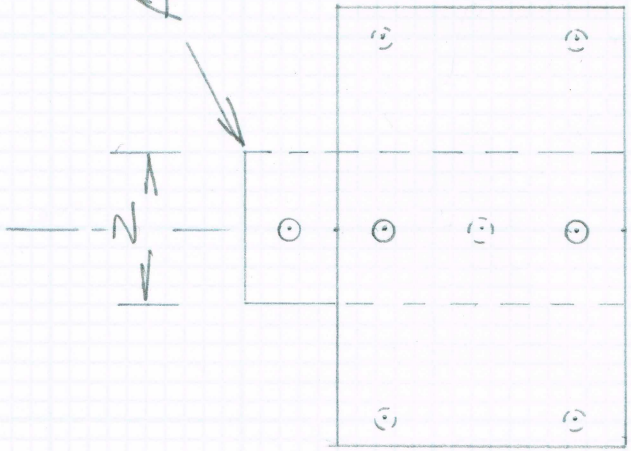
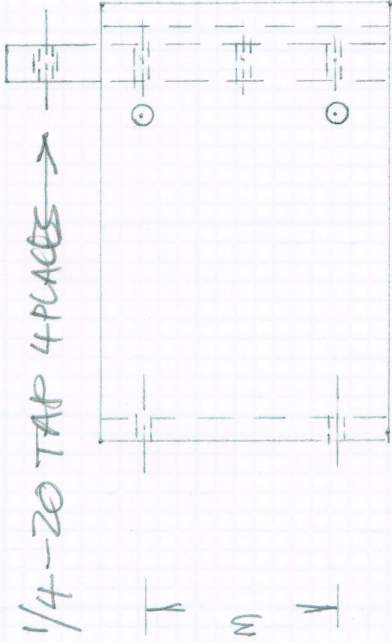


AL 6061 2" x 3/8" x 6" SPOT WELDED INTO TUBE



AL 6061 TUBING 0.25" WALL, 7" O.D.

1/4-20 TAPS, 120° APART,  
6 PLACES IN THE TUBE

MOUNTING FIXTURE TOGGLE  
FOR 8" O.D VACUUM TUBE

10-9-2012